



## Opportunities to enhance pollinator biodiversity in solar parks

H. Blaydes<sup>a,\*</sup>, S.G. Potts<sup>b</sup>, J.D. Whyatt<sup>a</sup>, A. Armstrong<sup>a,c</sup>

<sup>a</sup> Lancaster Environment Centre, Lancaster University, Lancaster, LA1 4YQ, UK

<sup>b</sup> Centre for Agri-Environmental Research, School of Agriculture, Policy and Development, University of Reading, Reading, RG6 6AR, UK

<sup>c</sup> Energy Lancaster, Lancaster University, Lancaster, LA1 4FY, UK

### ARTICLE INFO

#### Keywords:

Pollinator  
Solar parks  
Renewable energy  
Land use change  
Land management  
Ecosystem services  
Biodiversity  
Conservation

### ABSTRACT

Renewable power capacity is increasing globally in response to energy decarbonisation, with solar photovoltaic (PV) projected to be the dominant renewable. A significant proportion of solar PV is deployed as ground-mounted solar parks with potential implications for the hosting ecosystem. Given their relatively rapid introduction, the impacts on land use and the local environment are poorly understood. However, if deployed and managed strategically, solar parks could offer unique opportunities to enhance the local environment and benefit biodiversity, with implications for ecosystem components such as pollinators. With a focus on north-west Europe, we systematically review the available evidence on how land management practices relevant to solar parks can enhance pollinator biodiversity. We assessed 185 articles for the quantity and agreement of evidence for 27 management interventions and assigned a confidence score to each finding. We show that a range of interventions applied to solar parks could increase their ability to enhance pollinator biodiversity. We then use our assessment to synthesise ten evidence-based recommendations on how to improve solar park management for pollinators by providing foraging and reproductive resources, undergoing considered management practices, increasing landscape heterogeneity and connectivity and providing microclimatic variation. Ensuring beneficial management of rapidly growing solar parks contributes to their wider environmental sustainability, with positive implications for both pollinator conservation and the energy sector in general.

### 1. Introduction

Renewable energy sources have the potential to mitigate climate change through reducing greenhouse gas emissions from fossil fuel combustion [1], but relatively little is known of the implications of the required land use change. Renewable power capacity is on the rise and predicted to expand by 50% between 2019 and 2024 [2]. Solar photovoltaic (PV) makes up almost 60% of expected growth and is projected to lead the way in the transformation of the energy sector [2,3]. Much of the solar PV capacity is deployed as ground-mounted solar parks (arrays of solar PV modules mounted on metal supports) which in 2018 made up ~70% of newly installed PV capacity globally [4]. With a total capacity of 7, 550 MW and between 1.6 and 2 ha required to generate 1 MW, solar parks occupy ~13, 749 ha in the UK and there will be increased land take for solar park infrastructure as the contribution of solar PV to electricity generation rises [5]. Solar parks have been deployed across a number of European countries, including Germany, since 2005 and began to expand in the UK in 2011, becoming increasingly common features of the landscape [6]. Despite this, the impacts on land use and

the local environment are relatively unknown.

If implications for the local environment are not considered alongside solar park expansion, solar park development risks trading off climate change mitigation and local ecosystem degradation [7]. Understanding of a range of impacts of solar parks on the local environment is emerging, including changes to microclimate (air temperature, precipitation and evapotranspiration), soils (carbon cycling, soil microbial community composition and soil moisture) and vegetation (plant productivity and above ground biomass), of which the effects on biodiversity are poorly resolved [8–10]. As land use change commonly leads to habitat loss, the principal threat to biodiversity [11], increasing land take for solar parks may directly negatively affect some species through altering or degrading habitat [12]. Furthermore, habitat loss or alteration may limit species' ability to adapt to changing conditions through creating dispersal barriers to other areas of suitable habitat [12]. The limited existing evidence indicates that biodiversity has been positively and negatively affected by solar parks and associated land use change [10,13]. For example, in sensitive habitats, solar park deployment has degraded habitat through fragmentation and pollution and also led to

\* Corresponding author.

E-mail address: [h.blaydes@lancaster.ac.uk](mailto:h.blaydes@lancaster.ac.uk) (H. Blaydes).

<https://doi.org/10.1016/j.rser.2021.111065>

Received 24 June 2020; Received in revised form 2 March 2021; Accepted 30 March 2021

Available online 18 April 2021

1364-0321/© 2021 The Author(s). Published by Elsevier Ltd. This is an open access article under the CC BY license (<http://creativecommons.org/licenses/by/4.0/>).

the direct mortality of wildlife [14]. Moreover, solar parks under development are increasingly overlapping with conservation or protected areas acting as refuges for biodiversity [15]. However, in agricultural landscapes, which are often intensively managed and species-poor, there is potential for benefits [16]. Consequently, if deployed and managed strategically, solar parks can have minimal detrimental environmental impacts compared to other developments and may provide opportunities to enhance ecosystem function, with implications for ecosystem services such as pollination and crop production [17,18].

Pollination is a critical ecosystem service which could be impacted by land use change for solar parks [17,18]. Pollinators comprise a diverse group of animals, although a large proportion are insects with bees, both wild and managed, especially important [19]. Pollinators perform a number of services beneficial to human society, including sustaining wild plant populations, maintaining biodiversity and ecosystem stability and contributing to food security, among other functions [20]. For example, pollinators improve the production of 75% of global food crops [21]. Without pollination services, 5–8% of global crop production would be lost, valued at between \$235 billion and \$577 billion in 2015 [19]. However, there is growing concern over pollinator decline and widespread losses have been documented across Europe and the UK, with consequences for crop and wild plant pollination [22–24]. Using solar parks to improve pollinator populations could therefore deliver significant benefits, especially as many solar parks are situated within agricultural landscapes, and potentially contribute towards the mitigation of pollinator decline.

Much of the pollinator decline was caused by large scale habitat loss in response to the intensification of industrial scale agriculture, especially during the first half of the 20th century [25]. In addition, a range of drivers, many of which are associated with intensive agricultural practice, also contribute and include the reduction of foraging, nesting, shelter and reproductive resources when natural habitat is lost and the chronic and acute exposure to agrochemicals with a range of consequences [20,26,27]. Insecticides may pose the greatest risk to pollinators through direct mortality and a range of sub-lethal effects [28], whereas fertilisers and herbicides affect pollinator indirectly through changes to the non-cultivated flowering plant community and the foraging and reproductive resources they provide [29]. These agricultural-linked drivers act at both the local and landscape scale [30], but climate change is posing growing challenges for pollinators at the global scale [31] and pathogens, alien species and environmental pollution also pose threats [19]. In many locations, several of these drivers interact, posing perhaps the greatest threat to pollinators [19].

Solar parks offer considerable potential to mitigate the causes of decline in pollinator populations but there is currently limited scientific understanding, especially in light of the projected growth of solar [2,3]. Many of the measures identified to promote pollinator conservation and recovery, including reversing trends in agricultural intensification, maintaining natural habitat within the landscape matrix and creating or retaining microhabitats important for insects during climatic events [19, 32] could be employed at solar parks. Creating suitable habitat on solar parks, which are commonly located amongst intensively managed agricultural land, could offer refuges for pollinators in landscapes where much habitat has been lost, whilst also increasing landscape heterogeneity and connectivity. Furthermore, considering pollinators and biodiversity may help to ensure the wider environmental sustainability of such facilities and help meet planning policy criteria, statutory requirements and environmental policy targets, for example, those stated by the UK National Policy Planning Framework [33], the 25 Year Environment Plan for the UK [34] and the global Sustainable Development Goals [35]. Consequently, this paper aims to review the evidence that solar parks can enhance pollinator biodiversity. This is achieved by systematically searching and screening the literature for articles documenting impacts of interventions on pollinator populations and extracting evidence from relevant literature. Findings are then

synthesised in light of solar park conditions to produce ten evidence-based management recommendations.

## 2. Methods

A quick scoping review (QSR) based on guidelines by Collins et al. [36] was undertaken to provide a rapid, cost-effective assessment of peer-reviewed scientific literature to answer the primary question “what are the opportunities for solar parks to enhance pollinator biodiversity?”. The key steps were: protocol development, literature search, results screening and evidence extraction and are detailed below. Moreover, subsequent statistical analysis of the balance of the evidence and the assignment of confidence levels to the evidence, which are not part of the Collins et al. [36] protocol, are described.

### 2.1. Protocol development

Developing a protocol separates QSRs from less structured reviews, in that the methodology is clearly predetermined [36]. The first part of protocol development is establishing the scope of the primary question to provide clear limits. In this case, the geographic scope was restricted to north-west Europe. In terms of pollinator groups, the scope was limited to bees, butterflies and hoverflies. Bees are considered the most important contributors to global pollination, visiting more than 90% of the leading crop types [21] and included bumblebees, other wild bee species and managed honeybees (*Apis mellifera*). Hoverflies were included as they are one of the key pollinators after bees, valuable in both agricultural and natural systems [37]. Although playing a comparatively minor role in crop pollination in temperate regions, butterflies were also included as they are generally well studied, are an iconic component of biodiversity, and have been used as indicators of change for many insect groups for which data are lacking [38,39]. Whilst other insects, including other flies, beetles, moths, wasps and ants also contribute to pollination, they are less effective in Europe and were therefore excluded [40].

The second step in protocol development involved identifying the Population, Intervention, Control and Outcome (PICO) elements in the primary question. The Population is the subject of study and defined here as solar parks. However, as there is limited existing scientific evidence from solar parks, the Population included habitats that solar parks are managed as or the land use they replaced, such as grassland, meadow, agricultural or arable land (Table 1). The Interventions, or the factors to consider regarding the potential of solar parks to support pollinator populations, included management actions, the impact of solar park infrastructure and landscape connectivity (Table 1). The Comparator, or the control with no intervention, referred to areas or habitats without the interventions that impact pollinators and in this case they were the same as the Population (Table 1). Lastly, the Outcome was defined as the impact of the Interventions, referring to pollinator population response, for example, a change in abundance or diversity (Table 1).

The PICO elements were used to develop a search strategy using three search strings created based on Population and Control, Intervention and Outcome keywords. Keywords were generated through identifying popular relevant words and phrases found in published literature and through expert insight from both researchers and industry. Key words were then combined with Boolean and wildcard operators to form search strings (Table 1).

### 2.2. Literature search and results screening

Search strings were combined and an advanced search was undertaken in the Web of Science core collection, to provide a robust peer-reviewed body of results. All articles published 1945–2019 were considered if they were in English. Results from the search were downloaded on November 14, 2019 and were screened to reduce the

**Table 1**

Search strings based on keywords relating to PICO elements derived from the primary question, “what are the opportunities for solar parks to enhance pollinator biodiversity?”, used in the QSR. Boolean operators were used to combine keywords, where AND ensured results contain all keywords and OR ensured each result contained at least one of the listed keywords. The asterisks wildcard operator specified zero or more of any alphanumeric character, as in pollinat\* located pollinator, pollinators or pollinate. Keywords enclosed within double quote characters returned only results that contain the phrase as was typed. Each string began with TS to ensure the title, abstract and keywords of each result was searched.

PICO element	Search string
Population, Control	TS = (grass* OR farm* OR crop* OR agricultur* OR arable OR horticultur* OR pasture* OR meadow* OR “solar park” OR “solar farm” OR “solar panel” OR “solar array” OR “utility scale solar” OR photovoltaic OR brownfield)
Intervention	TS = (flower* OR wildflower* OR floral OR vegetation OR nectar OR pollen OR foodplant* OR resource* OR forage OR structure OR nest* OR hive* OR graz* OR mow* OR cut* OR sow* OR manage* OR maintain* OR plant* OR agrienvironment* OR agri-environment* OR fertil* OR herbicide* OR insecticide* OR pesticide* OR agrochemical* OR treatment* OR shad* OR climate* OR temperature* OR precipitat* OR radiation* OR moisture* OR humidity* OR wind* OR shelter* OR connect* OR fragment* OR movement* OR dispers* OR corridor* OR metapopulation* OR landscape)
Outcome	TS = (“bumblebee*” OR “honeybee*” OR “bee” OR “bees” OR “wild bee*” OR butterfly* OR hoverfl* OR pollinat*) AND (rich* OR abundan* OR divers* OR response* OR number* OR conserv* OR biodivers* OR habitat*)

returns to relevant evidence. A three phase screening approach was used, whereby the first phase involved reading only the title and marking articles as “relevant”, “uncertain” or “irrelevant” and discarding the “irrelevant” articles. In the second phase, the abstracts were read and “irrelevant” articles were discarded. In the third, and final, phase the full article was read and all “relevant” articles were classified into five themes based on factors known to impact pollinators and are relevant to solar parks: (1) foraging resources, (2) nesting, breeding and reproductive resources, (3) site management, (4) landscape and connectivity and (5) climate.

### 2.3. Evidence extraction

An evidence database was created, comprising references, pollinator groups, themes, sub-themes, interventions and the impact of the intervention on pollinators. Each piece of evidence was recorded within each of the relevant themes: (1) foraging resources, (2) nesting, breeding and reproductive resources, (3) site management, (4) landscape and connectivity and (5) climate. Within each theme, evidence was recorded under interventions (such as “summer grazing” or “sheep grazing”) and evidence across different, but related, interventions were grouped together to form sub-themes (such as “grazing”). When defining the sub-themes, it was ensured that the direction of the evidence was aligned. For example, under the sub-theme “grazing”, positive evidence for the intervention “no summer grazing” was realigned to negative impacts of “summer grazing”. Pollinators were classified into the following groups where possible: “bumblebee”, “bee” (any other wild bee species), “honeybee”, “butterfly” and “hoverfly”. If the pollinator group was not specified or multiple groups were analysed together the group “mixed pollinator” was used. The impacts of interventions on pollinators were categorised as “negative”, “neutral” or “positive” and included any effect on pollinator populations or the ability of pollinators to provide pollination services. Multiple pieces of evidence were extracted from a single article where results related to more than one pollinator group or if multiple interventions affected pollinators. Meta-analyses were included, with the overall findings extracted as evidence, rather than results from individual articles considered in the analysis. No weighting

was given to the evidence due to the potential to incorporate uncertainties and time constraints given the rapid nature of the review.

### 2.4. Analysis

To test if the distribution of evidence for each sub-theme was evenly distributed or if there was a trend, Chi-square goodness of fit tests were used, comparing the distribution of observed evidence across negative, neutral and positive impacts and an expected equal distribution. Chi-square goodness of fit tests were performed only on sub-themes which had more than 15 pieces of evidence, as this ensured that the expected frequency was always five or above, meeting the tests assumptions [41]. Any P values less than 0.05 were deemed statistically significant.

After the evidence had been analysed and interpreted, the discussion was supplemented with peer reviewed grey literature, such as the IPBES report on Pollinators, Pollination and Food Production [19], and additional journal articles in order to ensure contextualisation in the full extent of current knowledge where required. Grey literature and additional journal articles were not included in the evidence base and are not listed in summary tables.

### 2.5. Recommendations

Based on our analysis and input from a number of key stakeholders we developed recommendations for solar park management and a confidence level was assigned to each recommendation. Confidence levels, based on the four-box model used by the IPBES report on Pollinators, Pollination and Food Production [19] and other IPBES reports, was first applied to each sub-theme. Sub-themes were classified as “well established”, “established but incomplete”, “unresolved” or “inconclusive” based on the quantity and level of agreement of evidence, determined by quantitative thresholds based on qualitative descriptions of each classification from the IPBES [19] (Table 2). Management recommendations were based on the evidence within one or multiple sub-themes and assigned a confidence level based on the confidence levels of the relevant sub-themes. Where multiple sub-themes were included in one recommendation and were assigned different confidence levels, the level assigned to the majority of sub-themes within the recommendation was used. Where this was not possible, the confidence level assigned to the sub-theme in which the recommendation drew most from was used.

**Table 2**

Confidence levels assigned to sub-themes describing the impact of a group of related interventions on pollinator populations. Confidence levels are based on the four-box model used by the IPBES [19] and the quantitative thresholds for the quantity of evidence and the level of agreement were based on the specific evidence database used in this review, but related to the qualitative descriptions in IPBES [19].

Confidence level	Qualitative description	Quantity of evidence	Level of agreement
Well established	There is a comprehensive meta-analysis or other synthesis or multiple independent studies that agree.	$n \geq 15$	$\geq 69\%$
Established but incomplete	There is general agreement, although only a limited number of studies exist; there is no comprehensive synthesis, and/or the studies that exist address the question imprecisely.	$6 \leq n \leq 14$	$\geq 59\%$
Unresolved	Multiple independent studies exist but their conclusions do not agree.	$n \geq 6$	$\leq 58\%$
Inconclusive	There is limited evidence and a recognition of major knowledge gaps.	$n \leq 5$	n/a

### 3. Results and discussion

#### 3.1. Overview

The literature search returned 6981 articles and 185 were deemed relevant after screening (Fig. 1). Of the relevant articles, comparatively large numbers addressed foraging resources ( $n = 90$ ) and landscape and connectivity ( $n = 81$ ). Articles assessing the impact of management practices were also numerous ( $n = 59$ ). In comparison, fewer articles addressed nesting, breeding and reproductive resources ( $n = 27$ ) and climate ( $n = 16$ ).

From the 185 relevant articles, 472 pieces of evidence were extracted, with the distribution between themes following the trend observed in the number of articles sorted into each theme (Table 3). Evidence counts also varied between sub-themes (Table 4), with the breakdown of evidence displayed in Tables A – E (Appendices). Moreover, evidence counts varied across pollinator groups, with most evidence for bumblebees and butterflies and less for other wild bee species, honeybees or hoverflies (Table 3). Sixty-eight pieces of evidence related to mixed pollinators, where articles did not separate out pollinator groups (Table 3).

Out of the 27 sub-themes there were sufficient data ( $n > 15$ ) to test the relationship between the interventions and impact on pollinators for nine sub-themes (Table 4). For seven sub-themes there were significantly higher positive evidence counts compared to expected counts, specifically the presence of flowering plants, season-long access to resources, sown vegetation, taller or structurally diverse vegetation, organic farming, increasingly semi-natural or heterogeneous landscape and proximity and connectivity to semi-natural habitat ( $P < 0.05$ , Table 4). In contrast, agrochemical application had a higher negative evidence count compared to expected counts ( $P < 0.05$ , Table 4) and no significant difference between observed and expected evidence counts was recorded for grazing ( $P > 0.05$ , Table 4). The full results of Chi-square goodness of fit tests are shown in Table F (Appendices). Moreover, the evidence for the vast majority of sub-themes were categorised as either well established ( $n = 7$ , Fig. 2), established but incomplete ( $n = 9$ , Fig. 2) or inconclusive ( $n = 9$ , Fig. 2), whereas fewer sub-themes were classified as unresolved ( $n = 2$ , Fig. 2). In the following sections, we discuss the findings for each of the sub-themes under the broader themes of (1) foraging resources, (2) nesting, breeding and reproductive resources, (3) site management, (4) landscape and connectivity and (5) climate.

#### 3.2. Foraging resources

Foraging resources are one of the most important factors affecting pollinator populations [42]. Although some hoverflies use non-floral resources, most insect pollinators rely on floral resources for nutrition and hence foraging resources here refers to flowering plants [43]. The presence of flowering plants has a beneficial impact on pollinators ( $P < 0.01$ , Table 4), attributable to floral abundance, floral richness, functional diversity, forage quality and if the species were native (Table A).

Approximately half of the foraging resource evidence focused on floral abundance, typically relating to the number of individual flowers, inflorescences (a group or cluster of flowers on a stem) or the cover of flowers bearing a pollen or nectar reward (Table A). Positive evidence made up 79% of the evidence count and was recorded across pollinator groups, with most reporting positive relationships between floral resource abundance and bumblebee [44–55], bee [49,55–57], butterfly [48,52,53,57–62], hoverfly [48,51,56,57,63–65] and mixed pollinator [44,58,66–70] abundance, density or species richness (Table A). There was limited evidence for honeybees, with two pieces of evidence reporting positive relationships between floral abundance and honeybee abundance [44,66]. The neutral and negative impacts of floral abundance on pollinators [54,63,65,70–75] reported differential impacts depending on pollinator and flowering plant species, indicating species-specific preferences where pollinators can be selective with flower use and hence a diverse range of foraging resources is beneficial [76]. For example, the abundance of old man's beard (*Clematis vitalba*) negatively affected the distribution of ringlet (*Aphantopus hyperantus*) and meadow brown (*Maniola jurtina*) butterflies, but positively affected gatekeeper (*Pyronia tithonus*) distribution [71].

Just under half of the forage resource evidence discussed the impact of floral species richness on pollinators, of which 93% was positive (Table A). The majority established increases in bumblebee [49,55,73,77–82], bee [49,55,78,83], butterfly [60,73,81,82,84–88], hoverfly [64,89,90] and mixed pollinator [67,76,91–95] abundance or species richness with floral diversity. The increase in pollinators with floral diversity is commonly attributed to increased heterogeneity, allowing more species to co-exist through niche partitioning [96]. However, certain plant species may be of more general insect conservation value, although specific flowering plant species may be necessary to support more specialist pollinators [97]. For example, there is evidence suggesting that the impact of increased floral diversity saturates after nine species and that pollinators may only use a subset of species [78]. Honeybees presented with high flowering plant diversity utilised just 11% of plant genera, with all colonies studied using the same core set of species [98]. Similarly, wild bees and hoverflies used only 15% of plant species and 4 species supported 80% of pollinator visits [95]. Consequently, whilst diversity may be beneficial to an extent, the presence of key species may support the majority of pollinators.

Higher quality forage also had positive impacts on pollinators, although the evidence was limited to six pieces. Moreover, the definition of quality varied, including amino acid composition of pollen [50,99], nectar quality based on total sugar per inflorescence [46] and floral composition and age of wildflower strips [63]. There was insufficient evidence of the impacts of forage quality, functional diversity and also native species ( $n = 6$ , 2 and 5 respectively, Table A) to provide robust insight. However, the results indicate that higher quality forage and native species benefit pollinators as 67% and 60% of evidence respectively was positive (Table A). Positive [98,100] and neutral [100,101] impacts of native species were recorded, although the results mirror the wider literature where limited direct evidence for the benefits of native plant species exists. Instead, there is a focus on the negative impacts of alien plant species and how they can outcompete native plant species, change native plant-pollinator interactions and risk pollinator health if they are nutritionally poor [19]. In summary, although evidence is limited, native plant species may be beneficial in order to avoid negative impacts of alien species on pollinators.

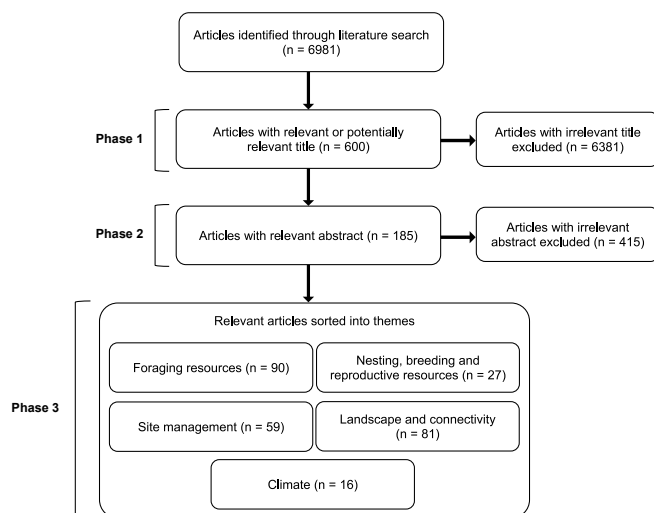


Fig. 1. Flow diagram of the literature search and three phase screening process, including the number of articles downloaded, screened and included in each of the main themes. Articles were categorised under multiple themes where relevant.

**Table 3**

Counts of evidence extracted from 185 articles relating to the impacts of interventions affecting pollinator populations. Pollinators were categorised into 6 groups: “bumblebee”, “bee” (any other wild bee species), “honeybee”, “butterfly”, “hoverfly” and “mixed pollinator” (if the pollinator group was not specified or multiple groups were analysed collectively).

Theme	Pollinator group						Total
	Bumblebee	Bee	Honeybee	Butterfly	Hoverfly	Mixed pollinator	
Foraging resources	58	17	10	30	19	23	157
Nesting, breeding and reproductive resources	20	5	0	5	2	6	38
Site management	27	9	7	46	6	17	112
Landscape and connectivity	42	17	7	40	23	19	148
Climate	3	0	0	12	0	2	17
<b>Total</b>	<b>150</b>	<b>48</b>	<b>24</b>	<b>133</b>	<b>50</b>	<b>67</b>	<b>472</b>

Hedgerows and wooded areas are also important sources of foraging resources ( $n < 15$ , Table 4). Although there were only ten pieces of evidence it suggests that butterflies were enhanced in field boundaries containing hedgerows [87], whereas those without hedgerows were negatively correlated with butterfly species richness [102]. This could be partially attributable to the higher resource density given the mix of woody and herbaceous flowering plant species [103]. Indeed, herbaceous species at the base of hedgerows were considered to be particularly important for hoverflies [104]. However, it is not just the presence of hedgerow that makes a difference, but the quality. More than twice as many bumblebees were observed on good quality hedgerows compared to poor quality hedgerows, where good quality was defined as hedgerows containing at least three woody plant species and those which were continuous and unbroken [104]. In addition to providing foraging resources, hedgerows support breeding pollinators [105,106], act as structural elements affecting pollinator movement [107,108] and provide shelter and a range of microclimates for pollinators [61,71].

As well as the amount of foraging resource, the availability throughout the season is important to provide nutrition to pollinators throughout the year ( $P < 0.01$ , Table 4). Beneficial effects of season-long access to resources, eliminating seasonal periods of nutritional deficit, were predominantly reported for bumblebees [55,80,109–112], bees [55,113,114] and honeybees [115,116]. Dependent on floral resources, strong temporal fluctuations can occur with potential detrimental impacts on pollinators. For example, farmland nectar supplies can change throughout the season and one article reported peaks in May and July and periods of lower availability in March, June, August and September on four farms in the UK [112]. There is evidence that late-season resources are more important than early-season resources as all evidence recorded for continuous or late-season resources was positive, whereas 60% of evidence was positive for early-season resources (Table A). This evidence is reinforced by observations that two thirds of pollinators have peak flight observations during the late summer when floral resources primarily take the form of herbs [91]. However, as flowering herbs are now scarcer and more patchily distributed than in the past, the availability of late season resources is increasingly important for pollinators [91].

Given the decline in foraging resources and pollinators, areas are actively managed for them, with a common approach of sowing nectar and pollen producing plant species. Such sown areas have beneficial impacts on pollinators ( $P < 0.01$ , Table 4) and generally support a greater abundance or diversity of pollinators than forage established through other methods, but also compared to grass-based treatments, other non-crop vegetation and cropland [54,81,117–127]. Benefits of sowing to reproduction were also documented, where a measure of bumblebee reproduction (an index of total biomass of bumblebee sexuals) was higher on sown forage patches compared to conventionally managed control areas after controlling for floral density [128]. Although responses of different bumblebee species vary according to plant species sown, the results suggested that targeted mixtures can enhance reproduction [128]. Sowing may therefore be most effective because of the ability to dictate species composition of the plant

community, and through purposefully including a diverse range of plant species, sown forage is able to support a broad range of pollinators.

Whilst sowing provides greater benefits and allows greater control of the resources provided, allowing the natural regeneration of vegetation may also positively impact pollinators ( $n < 15$ , Table 4). For example, 88% of insect diversity and 82% of volume was recorded on naturally regenerated resources compared to purposely sown resources on farmland [124]. In some cases the reported positive impacts of natural regeneration may be confounded by study design, reflecting the benefits relative to cropped areas rather than the establishment method [54, 129]. Furthermore, evidence reported that natural regeneration was an ineffective establishment method for butterfly abundance on field margins [130] and naturally regenerated areas supported a range of undesirable weed species [54,130]. However, evidence was scarce ( $n = 4$ , Table 4) and additional research is required to draw robust insight.

### 3.3. Nesting, breeding and reproductive resources

Whilst foraging resources are generally considered to be among the primary factors affecting pollinator populations, nesting, breeding and reproductive resources are also important (Table 4). However, foraging resources remain beneficial in the context of reproduction ( $n < 15$ , Table 4). Although there were only eight pieces of evidence, positive effects of foraging resources on nest density, survival or construction were documented [79,106,114,127,131,132] and a high local ratio of foraging habitat to number of nests was suggested to reduce competition [133]. Proximity to foraging resources has been investigated, but the evidence was scarce and no clear trend was observed ( $n < 15$ , Table 4). As bees are central place foragers, returning to the same site in between foraging trips, it may be expected that nesting and foraging resources in close proximity would be beneficial. However, evidence suggested that the benefit of nearby resources differs among species, partially dependent on variation in foraging ranges [134–137].

The presence of larval resources, both food plant and habitat, for butterflies and hoverflies is also beneficial ( $n < 15$ , Table 4). All evidence recorded for larval resources reported a positive impact on butterflies and hoverflies, although there is limited evidence despite the critical importance of larval resources for completing species' lifecycles. Butterflies often require specific plant species to lay their eggs on and on which larvae subsequently feed. Evidence for butterflies showed that larval food plants were a variable of major importance in butterfly habitat [138] and greater numbers of butterflies were recorded in habitats where the larval food plant was present [61,84]. A study on Brown hair streak butterflies (*Thecla betulae* L.) reported that the amount of young food plant (mostly blackthorn; *Prunus spinosa* L.) was relevant in explaining observed egg densities in an agricultural landscape [105]. Relying on a broader range of resources, hoverfly larvae requirements are highly variable, depending on specific macro and microhabitats [64]. However, the evidence recorded for larval habitat reported beneficial impacts and hoverflies were associated with suitable larval habitat at local and landscape scales [64,90].

As pollinators often require specific reproductive resources, a range

**Table 4**

The impacts of sub-themes on pollinators categorised as negative, neutral or positive based on evidence extracted from 185 articles within the foraging resources, nesting, breeding and reproductive resources, site management, landscape and connectivity and climate themes. Cells shaded darker red or green indicate there is a statistically significantly higher negative or positive evidence count respectively compared to expected counts ( $P < 0.05$ ) and cells shaded dark grey represent no significant difference ( $P > 0.05$ ) according to Chi-square goodness of fit tests. Cells shaded paler red, grey or green indicate a negative, neutral or positive trend respectively, suggested by evidence counts where  $n$  was too low to carry out statistical analyses ( $n < 15$ ).

Theme	Sub-theme	Total	- (%)	0 (%)	+ (%)
<b>Foraging resources</b>	Presence of flowering plants	110	2	17	81
	Presence of hedgerow	10	0	30	70
	Season-long access to resources	16	6	6	88
	Sown vegetation	17	0	0	100
	Naturally established vegetation	4	25	0	75
<b>Nesting, breeding and reproductive resources</b>	Availability of floral resources	8	0	13	88
	Proximity to resources	6	0	50	50
	Presence of larval resources	6	0	0	100
	Specific habitat features	14	0	7	93
	Nest site availability	4	0	25	75
<b>Site management</b>	Grazing	15	53	13	33
	Cutting	10	90	0	10
	Removal of cut material	4	50	0	50
	Mowing	3	100	0	0
	Taller or structurally diverse vegetation	22	0	18	82
	Agrochemical application	39	72	15	13
	Low intensity hedgerow management	4	0	0	100
	Organic farming	15	13	7	80
<b>Landscape and connectivity</b>	Increasingly semi-natural or heterogeneous landscape	106	15	16	69
	Organic farming in the landscape	4	0	0	100
	Linear features in the landscape	13	15	15	69
	Proximity and connectivity to semi-natural habitat	22	5	36	59
	Large habitat area	3	0	0	100
<b>Climate</b>	Warmer microclimate	2	0	0	100
	Shelter	6	0	17	83
	Microclimatic variation	3	0	0	100
	Climate warming	6	83	17	0

of habitat features are beneficial ( $n < 15$ , Table 4). Positive impacts of habitat features were attributable to tussocky vegetation, sparse vegetation, woodland edge, hedgerow, field margin, open terrain, sandy soil, sloped ground, and banks or ditches, although evidence for each was limited (Table B). Limited evidence for each feature represents species-specific reproductive requirements and evidence predominantly reported beneficial impacts on bumblebees [106,135,139–141], other wild bee species [133], and mixed pollinators [70,142]. For example,

interspecific variation in preferred habitat type was documented for seven UK bumblebee species, where *Bombus terrestris*, *B. lapidarius* and *B. lucorum* preferred banks or ditches and *B. pascuorum*, *B. hortorum* and *B. ruderarius* benefitted from tussocky vegetation [139].

A range of habitat features may boost nest site availability for a diversity of species and hence benefit pollinator populations ( $n < 15$ , Table 4). Nest sites can be natural or artificial, where natural nest sites for bees commonly comprise of undisturbed soil patches, hollow stems,

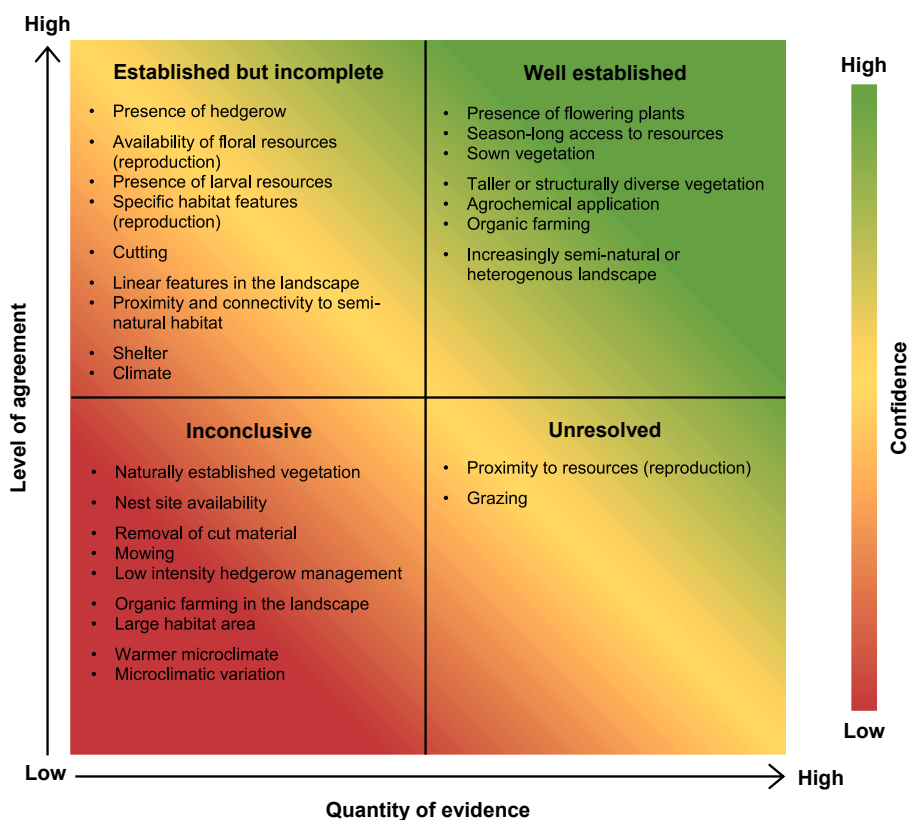


Fig. 2. The confidence levels assigned to 27 sub-themes made up of interventions that affect pollinators (Table 4) based on evidence extracted from 185 articles. Confidence increases towards the top-right corner as suggested by the shading and is based on the four box model used by IPBES [19]. Well established – there is a comprehensive meta-analysis or other synthesis or multiple independent studies that agree; Established but incomplete – there is general agreement, although only a limited number of studies exist; there is no comprehensive synthesis, and/or the studies that exist address the question imprecisely; Unresolved – multiple independent studies exist but their conclusions do not agree; Inconclusive – there is limited evidence and a recognition of major knowledge gaps.

shrubs, trees or dead wood [19]. Evidence for natural nest availability was scarce (n = 2, Table B), but suggested that increases in availability boosted red mason bee (*Osmia bicornis*) populations [143] and that availability is a critical factor affecting bumblebee and other wild bee species diversity more broadly [144]. Where natural nest sites are limited, artificial domiciles have been proposed, however, evidence of their effects is scarce and inconclusive (n = 2, Table B). For example, it was documented that artificial trap nests promoted cavity nesting bees, with brood cells increasing three-fold [144], but artificial nest boxes for bumblebees were found to be largely unsuccessful and achieved low uptake rates [145]. Additional research is therefore required to draw further conclusions on the impact of natural and artificial nest sites on pollinators.

### 3.4. Site management

To ensure that resources are suitable for pollinators, management is often required. A broad range of management practices can be undertaken, including grazing, as livestock selectively consume vegetation, enrich the soil through faeces and compact the soil by trampling, consequently affecting the plant community and pollinator resources [19]. Evidence suggests that grazing has no impact on pollinators (P > 0.05, Table 4), but this is due to the positive and negative effects of different grazing regimes counteracting one another (Table C). For example, beneficial effects of low intensity grazing (low frequency or low density of livestock) on abundance or richness were reported for bees [146], butterflies [138,146,147] and mixed pollinators [148]. In contrast, grazing at particular times of the year, such as during the summer, can have negative effects, with implications for the abundance and richness of bumblebees [57,149], other wild bees, butterflies and hoverflies [57]. Summer grazing rest periods extend the time period for flower development and increase floral resource availability [57] and therefore whilst inappropriately-timed or intensive regimes can be detrimental to pollinators, careful grazing management be beneficial.

Intensity and timing of management is also important for vegetation cutting, which had negative impacts on pollinators (n < 15, Table 4). Intensity refers to the frequency of cutting and it was suggested that two sward cuts per year (compared to a single cut or no cuts) resulted in a decrease in mixed pollinator species richness [82] whilst decreasing cutting frequency benefitted butterflies [81]. As with grazing, cutting during the summer was suggested to negatively impact pollinators due to the reduction in resources at crucial times [53] and benefits of summer rest periods were reported across pollinator groups [57,121]. Following a cut, material is either removed or left in situ and this can impact pollinators indirectly through changes in the plant community, where leaving material in situ acts as a physical barrier to light that alters plant competition [53]. However, there was insufficient evidence of the impacts of removal of cut material to provide robust insight of the impact on pollinators (n < 15, Table 4). This was also the case for mowing (n < 15, Table 4), but trends appeared similar to those of grazing and cutting, suggesting low intensity regimes and summer rest periods benefit pollinators [102,150,151].

Practices such as grazing, cutting and mowing impact pollinators indirectly through changes in vegetation structure; taller or structurally diverse vegetation have a positive impact on pollinators (P < 0.01, Table 4). Structurally diverse vegetation was associated with greater bumblebee and butterfly abundance, richness or diversity [81,152], whereas the benefits of tall vegetation were predominantly associated with butterflies, with most evidence reporting relationships between vegetation height and butterfly abundance or richness [52,60,73,86,146,152]. Taller vegetation is likely to be a feature of habitats managed less intensively, or could indicate increased biomass and vegetation complexity. Less evidence was recorded for other pollinator groups other than butterflies, although correlations between vegetation height and bumblebee [52] and hoverfly [70] species richness were documented and taller flowers generally attracted more insect visitors [153,154].

Agrochemicals have a negative impact on pollinators, attributable to

the effects of fertilisers, herbicides and insecticides ( $P < 0.01$ , Table 4). Two thirds of the agrochemical evidence focused on insecticides, with 81% reporting negative impacts (Table C). Evidence established decreases in bee [148,155], honeybee [155], butterfly [156–158], hoverfly [155] and mixed pollinator [69,159–161] abundance, richness or density with insecticide use, but also reported a range of sub-lethal or lethal effects on pollinators. Impacts on pollinator reproduction included reduced colony growth in bumblebees [69,77,162] reduced nesting in solitary bees [69] and honeybee colony losses across England and Wales [163]. Other evidence focused on pollinator behaviour and performance, reporting changed patterns in foraging behaviour [162], altered sensory responses and memory [164] and decreased flight distance and duration [165] in response to insecticide exposure.

Negative impacts of fertilisers and herbicides on pollinators were also documented (Table C). For example, declines in bee abundance and richness were reported with fertiliser use [82,148,160], vegetation of fertilised soils were found to be unimportant for bumblebees [166] and stopping fertilisation was suggested to be beneficial for butterflies [81, 167]. Fertiliser application commonly reduces floral diversity due to competitive exclusion and therefore reduces the diversity of resources available to pollinators [168]. Commercial use of herbicides can also diminish pollinator resources, with declines in butterfly abundance documented [121,158]. In contrast, some evidence reported positive impacts of fertiliser and herbicide use on pollinators. For example, benefits to nettle-feeding peacock (*Aglais io*) and small tortoiseshell (*Aglais urticae*) butterflies were documented, as fertiliser application increased nitrogen content in their food plant (stinging nettle; *Urtica dioica*), resulting in higher survival rates, shorter larval periods and heavier pupae in both species [169]. However, effects of fertiliser and herbicide use may be indicative of the impacts of changes in land use rather than agrochemical use [148].

Low intensity hedgerow management also had positive impacts on pollinators, although the evidence was limited to four pieces ( $n < 15$ , Table 4). Benefits were reported where hedgerows were cut less frequently, cut in winter instead of autumn, cut incrementally (where the cutter bar is raised by 10 cm each time the hedgerow is cut) [170] and where hedgerows were not managed at all [150]. However, as evidence was scarce additional research is required for further insight.

In addition to management of particular habitat features, management at the farm scale is important, with organic farming having a positive impact on pollinators ( $P < 0.01$ , Table 4). The evidence reported benefits of organic farming to bumblebees [109], honeybees [116], butterflies [109,171–174], hoverflies [175] and mixed pollinators [92,176,177]. Benefits are attributable to organic farms generally having greater habitat heterogeneity, reduced agrochemical use and conserve more natural vegetation than conventional farms, retaining more resources for pollinators [178].

Due to the nature of the evidence extraction method, management practices have been considered in isolation, although in reality the combination of management actions is important. Yet, there is limited evidence and articles investigating multiple management actions are scarce, with one returned in the literature search, suggesting that bumblebee and butterfly abundance and diversity differed according to combinations of fertiliser application, cutting, grazing and the sowing of different seed mixtures [81]. Consequently, the results offer an insight into the impacts of certain management practices on pollinators, but to gain a more complete understanding the entire management regime should be considered.

### 3.5. Landscape and connectivity

When providing resources and managing habitats for pollinators it is important to consider larger spatial scales, surrounding land uses and connectivity. There is evidence that increasingly semi-natural or heterogeneous landscapes have a positive impact on pollinators ( $P < 0.01$ , Table 4), where heterogeneous landscapes are composed of a greater

diversity of land uses or higher proportions of semi-natural habitat. Landscape scale typically referred to a radius of 250 m–5 km surrounding a pollinator habitat or resource and increases in species richness or abundance with increasingly semi-natural or heterogeneous landscapes were documented for bumblebees [48,51,55,73,110,126, 148,179,180], other wild bees [148,179,181–184], butterflies [60,102, 151,174,183,185–191], hoverflies [51,64,65,70,74,184,188,192] and mixed pollinators [67,68,93,175,177]. Increasing cover of semi-natural habitat in the landscape results in an increase in critical foraging and reproductive resources for pollinators and a diversity of habitats can mean that pollinators have to travel less far to reach specific resources provided only by certain habitat types [179]. Different semi-natural habitats in the landscape differ in value to pollinators depending on species-specific preferences, explaining the neutral and negative evidence. Moreover, neutral and negative impacts of increasing semi-natural or heterogeneous landscapes may be attributable to the differences in habitat quality across different study areas.

Other semi-natural landscape characteristics, such as linear elements, also had a positive impact on pollinators ( $n < 15$ , Table 4) and included ditches, edge habitats and roads (Table D). Evidence for the impact of ditches was scarce and specific to species that use them as a source of foraging and reproductive resources [135], but edge habitats were valuable to a wider range of pollinators. For example, positive impacts of edge habitats, such as field margins and hedgerows, were documented for bumblebees [80], butterflies [70,193], hoverflies [192] and mixed pollinators [70,194]. Evidence of positive impacts was also recorded for roads in the landscape [70,193], although this was limited and negative impacts were also documented [70,80]. The contrasting evidence is explained by the benefits of the foraging resources offered by road verges and suboptimal management regimes and direct mortality from traffic [80].

Linear elements in the landscape also act as semi-natural pollinator corridors, facilitating movement and enhancing landscape connectivity, which is important for pollinators ( $P < 0.01$ , Table 4). Non-cultivated linear elements are often the only remaining connections between areas of semi-natural habitat in agricultural landscapes and evidence specifically reported benefits of field margins and hedgerows for pollinator movement [107,108,195,196]. Movement between suitable habitats decreases the likelihood of population extinction through reduced gene flow, inbreeding depression and the increased susceptibility to environmental perturbations [197]. The ability to move between habitats differs between species depending on ecological traits and hence the proximity to other semi-natural habitat has an impact on pollinators [73]. Evidence documented positive impacts of proximity to semi-natural habitat on the abundance, density or richness of bumblebees [73,198], other wild bee species [56], butterflies [73,198], hoverflies [56] and mixed pollinators [199,200]. Species' ability to move further or differences in the permeability of landscape matrices across articles may explain the evidence documenting no impact of proximity to semi-natural habitat [56,66,105,198,200].

Whilst the evidence suggested that semi-natural, rather than agricultural, landscapes benefit pollinators, the type of agriculture can have an impact. Organic farming in the landscape had a positive impact on pollinators, although this was supported by only four pieces of evidence ( $n < 15$ , Table 4). Enhanced bee and butterfly species richness was documented with increased organic cropping in the landscape [49,62] and increases in pollinator abundance and richness were reported at the regional scale in areas dominated by organic farming [92]. However, organic farming is typically less productive than conventional farming and can require a greater area of land to produce equivalent yields [201]. If additional semi-natural habitat is required to be brought into production to compensate, then organic farming may be overall costly to pollinators at the landscape scale, although this was not considered by the evidence. Additional evidence is therefore required to gain further insight into the impact of the type of agriculture at the landscape scale on pollinators. Similarly, there was insufficient evidence of the impacts



of habitat area to provide robust insight ( $n < 15$ , Table 4).

### 3.6. Climate

In addition to biotic and landscape factors, abiotic factors, including climate, also impact pollinators at macro and micro scales. Insect pollinators are ectothermic and hence are strongly influenced by the microclimate that they experience [202]. Warm microclimates and shelter benefit pollinators, although there were only two and six pieces of evidence respectively ( $n < 15$ , Table 4). Almost all of the evidence focused on butterflies and although limited, supports well-known ideas that north-western European butterfly species are often dependent on a warm and protected microclimate. Specifically, insolation was a variable of major importance in linear habitats [138] and influenced butterfly distribution [71]. The importance of specific habitat types for the shelter that they provide was also documented, including tall vegetation [203], green lanes [59], shrubs, hedgerows and woodland [61,71] which are sought out by butterflies when conditions in more open, exposed habitats become unsuitable [61]. However, evidence also reported that a variety of microclimates is beneficial for pollinators, although evidence was scarce ( $n < 15$ , Table 4). Habitats offering variation in vegetation structure or topography provide a range of thermal conditions for pollinators that can be exploited according to shifts in climate [204,205] and hence a variety of microclimates could act as a refuge for pollinators from climate warming [206].

Climate warming has a negative impact on pollinators and the evidence documented declines in wild bee or butterfly abundance, diversity or reproduction with higher temperatures [99,149,207,208], although there were only six pieces of evidence ( $n < 15$ , Table 4). Limited evidence was recorded, despite the plethora of pollinator response to climate warming research, because many articles examining the impacts of climate warming on pollinators focus on larger spatial scales than habitats managed as solar parks and hence key words were not present in the majority of articles titles, keywords or abstracts (Table 1). Nevertheless, the effects of climate warming will impact pollinators in this context and affect all organisational levels, from the individual, to population genetics, to species-level shifts and changes at the community level [27]. Impacts have been documented already, whereby the ranges of plants and pollinators have moved, abundance has altered and phenology has shifted in response to climate warming over the last few decades [19]. In addition, indirect impacts of climate warming on pollinators, such as those associated with impacts on preferred plant species or habitats pollinators rely on, have been documented [19]. Models indicate that climate warming will continue to impact pollinators in the future and one piece of evidence predicted decreases in butterfly diversity under future climate change scenarios [209]. However, the impacts of climate warming on pollinators may not be fully apparent for decades due to the delayed response times of ecological systems [19].

## 4. Evidence-based recommendations

Here, using the findings of the QSR, we present ten evidence-based management recommendations centred around the five main themes: (1) foraging resources, (2) nesting, breeding and reproductive resources, (3) site management, (4) landscape and connectivity and (5) climate (Fig. 3). The recommendations are based directly on the evidence, align with industry biodiversity guidelines [16] and are grounded in solar park management practice, acknowledging the restrictions of solar park operation and maintenance needs. Whilst the recent nature of land use change for solar parks and limited assessments preclude strong evidence of the long-term impacts on pollinators, early evidence suggests enhancements are feasible. For example, a greater diversity of bumblebees and butterflies were observed on solar parks managed for biodiversity across eleven sites in the UK [210].

Solar park management strategies must incorporate potential implications for site operation. It is recognised that ideal management

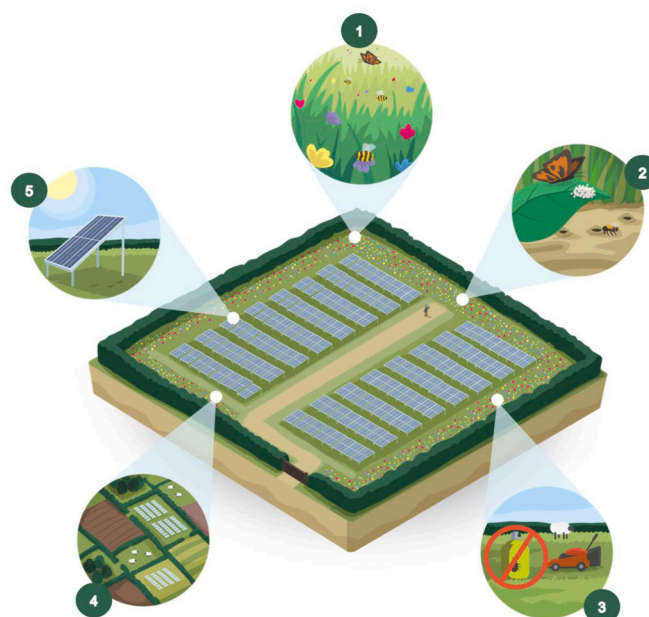


Fig. 3. Illustration depicting the potential for solar parks to enhance pollinator biodiversity through (1) providing foraging resources, (2) providing nesting, breeding and reproductive resources, (3) undertaking suitable management practices, (4) increasing semi-natural habitat in the landscape and promoting connectivity and (5) generating microclimatic variation on solar parks.

practices, such as repeat visits to sites to manage vegetation differentially dependent on location within a park, may not always be possible due to cost. Furthermore, the cost implications of the recommendations may either prohibit or limit the scale of application. Where cost is limiting, application to small areas or around the solar park margins can still deliver valuable ecosystem benefits [211]. Further, site characteristics may make them more or less suitable for management actions to enhance pollinators and if resources are limited, it may be preferable to focus efforts on fewer sites. Finally, whilst confidence in the underpinning evidence for almost all of the recommendations are “well established” or “established but incomplete”, expert local advice about solar park management should be sought to tailor implementation, as each site is unique. Information, for example regarding appropriate seed mixes, about the most suitable management for pollinators at a local level can be sought from local ecologists (e.g. Association of Local Government Ecologists, academics, and NGOs such as the Bumblebee Conservation Trust, Butterfly Conservation, Plantlife or Hedgelinek).

### 4.1. Foraging resources

Recommendation 1: Provide a diverse mix of key flowering plant species (*well established*).

Solar parks should be managed to provide a diverse mix of pollinator flowering plant species; foraging resources are essential for pollinators and diversity is of benefit for wild bees, butterflies and hoverflies (Table A). Rather than maximising floral diversity, it is preferable to provide a number of key plant species, preferably of local provenance, and selected on a site-by-site basis suited to local growing conditions and target pollinator communities (pollinator species can be specific in the floral resources they require).

Given that the footprint of solar parks is around 5% with solar panels generally raised 1–2.5 m above the ground there is significant opportunity to provide floral resources within solar parks [16]. Although, as solar panels typically over-sail 25–40% of the park, altering the microclimate, plant communities and productivity may vary spatially [8,16,210,211]. To have the greatest influence over the floral resources

provided and to create a plant community targeted at a specific pollinator community, sowing is the most effective establishment method (Table A). The solar park could be entirely re-seeded with a mix containing a diverse range of flowering plant species, or where this is not possible, strips of floral resources sown in certain places would be beneficial. Solar park margins are the most appropriate location for wildflower strips, where vegetation can grow taller without the need for frequent management to prevent solar panel shading. Periodic re-seeding every few years may also be required to maintain plant biodiversity, although over time it is likely that additional species will colonise naturally.

Recommendation 2: Plant or maintain hedgerows at the site boundary (*established but incomplete*).

Installing, or maintaining if already present, hedgerows at the site boundary of a solar park provides a multitude of benefits to pollinators in addition to the co-benefit of visual screening, a common requirement of planning applications. Hedgerows are an important source of floral resources for pollinators, attributable to the mixture of woody and herbaceous plant species (Table A). Hedgerows also support breeding pollinators, enhance pollinator movement and provide shelter and favourable microclimates. New and existing hedgerows should also be carefully managed, with evidence suggesting that low intensity practices (e.g. incremental or less frequent cutting) and winter management yields the greatest benefits to pollinators (Table C).

Recommendation 3: Ensure season-long access to foraging resources (*well established*).

Flowering plants and hedgerows should be planned and managed to ensure season-long access to foraging resources, as this is important for pollinators (Table A). Seed mixes should include plant species that flower at different points throughout the season to ensure continuous resource availability and to complement hedgerow species where applicable. Evidence suggested that late season resources are especially important to pollinators (Table A) and therefore establishing late-flowering species on solar parks will be particularly beneficial and help to eliminate periods of nutritional deficit.

#### 4.2. Nesting, breeding and reproductive resources

Recommendation 4: Provide a range of nesting, breeding and reproductive resources (*established but incomplete*).

Nesting, breeding and reproductive resources are important for pollinators and hence solar parks should provide a diverse range of resources for target pollinator communities. In comparison to floral resources the implications are poorly resolved and no studies have addressed such resources in a solar park context. However, the evidence suggests that creating suitable natural habitat for nesting, breeding and reproduction is more effective at boosting nest site availability or breeding habitat than providing artificial domiciles (Table B). Natural habitat is also associated with other benefits, including the provision of floral resources, which may be beneficial when coupled with nesting, breeding and reproductive resources (Table B). Indeed, the evidence specifically described the benefits of features such as tussocky vegetation, sparse vegetation and banks or ditches for pollinator nesting, breeding and reproduction (Table B) and hence management actions to provide such features should be undertaken where possible.

Rather than specific habitat features, some pollinators rely on particular plant species on which to lay their eggs and these preferred plant species could be included in seed mixes or planted. However, where such plants are established should be carefully considered as pollinators can be specific not only about the plant species, but the conditions in which the plant itself grows. For example, female butterflies often depend upon highly specific conditions for egg-laying, relying on particular microclimates. Such resources may be best established in solar park margins, where vegetation is often managed less intensively, to prevent the destruction of eggs and larvae. Refraining from cutting some areas of vegetation in the margins annually would also aid

pollinator larvae or adults overwintering in this habitat.

#### 4.3. Site management

Recommendation 5: Graze, cut or mow at low intensity and late in the season (*established but incomplete*).

Grazing, cutting or mowing should be low intensity and undertaken later in the season, ensuring that pollinator foraging resources are available throughout the summer and providing the opportunity for forbs to flower and set seed (Table C). However, it is critical to solar park electricity productivity that vegetation does not shade the panels. Consequently, where this occurs, narrow strips (<1 m) in front of the south facing panel edge should be cut or mown as required.

Sheep are the most common and arguably the most suitable grazers on solar parks, as cattle or horses are able to dislodge mounting systems and pigs or goats can cause cable damage [6]. However, compared to other grazers, sheep graze the vegetation very low. Consequently, deploying sheep late in the season is very important and if summer grazing is necessary, should be undertaken at low densities (Table C). Moreover, there is some evidence that well managed spring and winter grazing, but not summer grazing, can increase plant diversity on solar parks [212]. Where cutting or mowing is undertaken, a similar low intensity regime with a summer rest period will be most beneficial (Table C).

Recommendation 6: Create or maintain variation in vegetation structure (*well established*).

Grazing, cutting and mowing regimes should aim to create heterogeneity in the vegetation within the solar park, as structurally diverse or taller vegetation has a positive impact on pollinators (Table C). Excluding areas from grazing, cutting or mowing management would enhance structure and create areas of taller vegetation. The evidence suggested that taller vegetation benefits butterflies in particular, although species-specific preferences may mean that creating patches of vegetation of different heights may support a wider range of species. Within a solar park, strip mowing to prevent panel shading would create areas of shorter vegetation, increasing heterogeneity in vegetation structure and height across the solar park.

Recommendation 7: Minimise the use of agrochemicals (*well established*).

Minimising agrochemical use on solar parks brings benefits to pollinators as well as reducing management costs. Agrochemicals negatively impact pollinators (Table C) and whilst solar parks may provide a refuge from fertilisers and insecticides, herbicides are used at some sites and can diminish pollinator floral resources. A survey across UK solar parks reported non-selective herbicide use at some solar parks, resulting in the eradication of broadleaved plants and hence pollinator foraging and reproductive resources [213]. Ideally, the use of herbicides at solar parks should be minimised; even selective herbicide used to target injurious weeds or invasive species can eliminate non-target species. If not possible to avoid herbicide use, techniques to control undesirable species such as spot spraying, weed wiping or mechanical removal are preferable to spraying [213].

#### 4.4. Landscape and connectivity

Recommendation 8: Target management for pollinators on solar parks located in homogenous and intensive agricultural-dominated landscapes (*well established*).

Solar parks offering pollinator resources will likely have the greatest impact in resource-depleted landscapes and thus pollinator management strategies on solar parks located in predominantly intensive agricultural or homogenous landscapes should be prioritised (Table D). Considered site management could enable solar parks to act as sizeable patches of semi-natural habitat in the landscape, providing foraging and reproductive resources for pollinators, as well as shelter and microclimatic variation. Moreover, there may also be benefits for surrounding crops

through boosting pollination services [17,18].

Recommendation 9: Promote connectivity to semi-natural habitat (*established but incomplete*).

Connectivity between solar parks and other semi-natural habitats should be enhanced through the installation or maintenance of semi-natural linear features (e.g. hedgerows, wildflower strips) as they can act as pollinator corridors, improving connectivity and facilitating pollinator movement (Table D). This will enable solar parks to act as stepping stones across the landscape for pollinators, connecting otherwise isolated habitat patches and populations [214]. Consequently, features such as hedgerows should be installed or maintained at site boundaries and where possible, actions outside of the boundary should be considered. For example, further hedgerows could be installed or margins in surrounding fields could be left uncultivated and seeded with flowering plant species used by pollinators.

#### 4.5. Climate

Recommendation 10: Generate a range of microclimates (*inconclusive*).

Microclimatic variation should be generated on solar parks to provide a range of thermal conditions for pollinators and although solar park infrastructure already provides microclimatic niches, this can be enhanced through considered management of natural features [8]. For example, features such as tall vegetation or hedgerows can provide warmer microclimates and shelter that benefit some pollinators (Table E).

## 5. Conclusion

As solar PV capacity rises there will be increased land take for ground-mounted solar parks and to ensure optimal ecosystem outcomes associated with this land use change, the local environment and biodiversity must be considered. Solar parks have considerable potential to enhance pollinator biodiversity through mitigating some of the major drivers of pollinator decline. Whilst the areas are relatively small compared with dominant land uses, such as agriculture, solar parks offer areas of land for enhancement with different geometries (i.e. squarer compared to conservation strips around arable fields), provide opportunities for the creation of different habitats and minimise the impacts of agricultural edge effects (e.g. spraying). Moreover, they are often located in agricultural landscapes where action to reduce pollinator biodiversity decline is most needed.

## Appendix A

### Table A

Raw evidence counts extracted from relevant articles returned in the literature search within the foraging resources theme ( $n = 90$ ). Each piece of evidence was categorised as “negative”, “neutral” or “positive” depending on the impact on pollinator populations. Shading represents the quantity of evidence recorded for each intervention, where darker shades represent a higher count. Specifically, no shading represents a count of 0, the lightest shade represents a count of 1, the light shade represents counts of 2–5, the dark shade represents counts of 6–20 and the darkest shade represents counts of 21 or higher [215,216].

Our review suggests enhancement of pollinator biodiversity is achievable through undertaking considered management of solar parks to provide pollinator foraging and reproductive resources, enhance landscape heterogeneity and connectivity and generate microclimatic variation. Management recommendations based directly on the evidence could therefore be used to inform optimal solar park management, where the overarching outcomes are applicable to the UK and north-west Europe but also to other temperate regions outside of these. Applying such recommendations could ensure solar parks contribute to the reversal of pollinator biodiversity decline, especially as land use for solar increases. However, current key knowledge gaps exist around how solar parks are currently managed and this information would be useful in shaping optimal management regimes. Furthermore, knowledge gaps exist where the impact of interventions on pollinators were “inconclusive” or “unresolved” and hence future research effort is required to better understand the impacts of certain practices on pollinator biodiversity. Monitoring of both the habitat established and pollinator biodiversity in response to management practices on solar parks is also critical to quantify the effectiveness of interventions, especially in the longer term. Collaboration between industry, policy and researchers is therefore required to enhance the wider environmental sustainability of solar parks and ensure that the decarbonisation of the energy sector incorporates environmental benefits, minimising the trade-off between climate change mitigation and local biodiversity.

### Declaration of competing interest

The authors declare that they have no known competing financial interests or personal relationships that could have appeared to influence the work reported in this paper.

### Acknowledgements

This work was supported by the Natural Environment Research Council (grant number: NE/R010226/1), with HB’s studentship through the Envision Doctoral Training Partnership and project industry partner Low Carbon. AA was supported by a Natural Environment Research Council Industrial Innovation Fellowship (grant number: NE/R013489/1). SGP was supported by Showcase (EU H2020 project ID: 862480). We thank David Eyre (Twig), Jonathan Scurlock (National Farmers’ Union) and Hannah Montag (Clarkson & Woods) for their comments on a draft of the management recommendations for solar parks.

Sub-theme	Intervention	Total	-	0	+	References
<b>Presence of flowering plants</b>	Abundance	56	1	11	44	[44-75, 138, 181]
	Richness	41	0	3	38	[49, 55, 60, 64, 67, 73, 74, 76-95, 115, 166, 215]
	Functional diversity	2	1	1	0	[153, 216]
	Forage quality	6	0	2	4	[46, 50, 63, 99]
	Native species	5	0	2	3	[98, 100, 101]
<b>Presence of hedgerow</b>	Presence of hedgerow	5	0	0	5	[87, 102, 103]
	Presence of understory flowers	4	0	3	1	[104]
	High quality hedgerow	1	0	0	1	[104]
<b>Season-long access to resources</b>	Early season resources	5	1	1	3	[55, 80, 112, 113]
	Late season resources	8	0	0	8	[80, 91, 109-113]
	Continuous resources	3	0	0	3	[109, 115, 116]
<b>Sown vegetation</b>	Sown vegetation	17	0	0	17	[54, 81, 117-128, 140]
<b>Naturally established vegetation</b>	Naturally established vegetation	4	1	0	3	[54, 124, 129, 130]

**Table B**

Raw evidence counts extracted from relevant articles returned in the literature search within the nesting, breeding and reproductive resources theme ( $n = 27$ ). Each piece of evidence was categorised as “negative”, “neutral” or “positive” depending on the impact on pollinator populations. Shading represents the quantity of evidence recorded for each intervention, where darker shades represent a higher count. Specifically, no shading represents a count of 0, the lightest shade represents a count of 1, the light shade represents counts of 2–5, the dark shade represents counts of 6–20 and the darkest shade represents counts of 21 or higher [217].

Sub-theme	Intervention	Total	-	0	+	References
<b>Availability of floral resources</b>	Availability of floral resources	8	0	1	7	[79, 106, 114, 127, 131-133, 217]
<b>Proximity to resources</b>	Proximity to floral resources	4	0	2	2	[135-137]
	Proximity to semi-natural habitat	2	0	1	1	[134]
<b>Presence of larval resources</b>	Presence of larval food plant	4	0	0	4	[61, 84, 105, 138]
	Presence of larval habitat	2	0	0	2	[64, 90]
<b>Specific habitat features</b>	Tussocky vegetation	2	0	0	2	[139, 141]
	Sparse vegetation	1	0	0	1	[142]
	Woodland edge	1	0	0	1	[141]
	Hedgerow	3	0	1	2	[105, 106, 140]
	Field margin	2	0	0	2	[133, 140]
	Open terrain	1	0	0	1	[141]
	Sloped ground	1	0	0	1	[142]
	Sandy soil	1	0	0	1	[70]
	Banks/ditches	2	0	0	2	[135, 139]
<b>Nest site availability</b>	Natural nest sites	2	0	0	2	[143, 144]
	Artificial domiciles	2	0	1	1	[113, 145]

**Table C**

Raw evidence counts extracted from relevant articles returned in the literature search within the site management theme ( $n = 59$ ). Each piece of evidence was categorised as “negative”, “neutral” or “positive” depending on the impact on pollinator populations. Shading represents the quantity of evidence recorded for each intervention, where darker shades represent a higher count. Specifically, no shading represents a count of 0, the lightest shade represents a count of 1, the light shade represents counts of 2–5, the dark shade represents counts of 6–20 and the darkest shade represents counts of 21 or higher [218–221].

Sub-theme	Intervention	Total	-	0	+	References
<b>Grazing</b>	Grazing	3	2	1	0	[81, 82, 207]
	Low intensity grazing	5	0	0	5	[138, 146-148]
	Summer grazing	5	5	0	0	[57, 149]
	Grazing by sheep	1	1	0	0	[86]
	Grazing by traditional or commercial livestock breeds	1	0	1	0	[147]
<b>Cutting</b>	Frequent cutting	2	2	0	0	[81, 82]
	Cutting in summer	8	7	0	1	[53, 54, 121]
<b>Removal of cut material</b>	Removal of cut material	4	2	0	2	[53]
<b>Mowing</b>	Frequent mowing	2	2	0	0	[150, 151]
	Mowing in summer	1	1	0	0	[102]
<b>Taller or structurally diverse vegetation</b>	Heterogeneous sward structure	5	0	0	5	[81, 82, 140, 152]
	Tall vegetation	15	0	4	11	[52, 60, 70, 73, 86, 88, 146, 151-154]
	Mid-late successional vegetation	2	0	0	2	[166, 218]
<b>Agrochemical application</b>	Fertiliser	9	5	2	2	[81, 82, 148, 160, 166, 167, 169]
	Herbicide	4	2	0	2	[117, 121, 148, 158]
	Insecticide	26	21	4	1	[69, 77, 148, 155-165, 219-221]
<b>Low intensity hedgerow management</b>	Cutting in winter	1	0	0	1	[170]
	Reduced cutting frequency	1	0	0	1	[170]
	Incremental cutting	1	0	0	1	[170]
	Unmanaged hedgerow	1	0	0	1	[150]
<b>Organic farming</b>	Organic farming	15	2	1	12	[65, 92, 94, 109, 116, 171-177]

**Table D**

Raw evidence counts extracted from relevant articles returned in the literature search within the landscape and connectivity theme (n = 81). Each piece of evidence was categorised as “negative”, “neutral” or “positive” depending on the impact on pollinator populations. Shading represents the quantity of evidence recorded for each intervention, where darker shades represent a higher count. Specifically, no shading represents a count of 0, the lightest shade represents a count of 1, the light shade represents counts of 2–5, the dark shade represents counts of 6–20 and the darkest shade represents counts of 21 or higher [222–235].

Sub-theme	Intervention	Total	-	0	+	References
<b>Semi-natural or heterogeneous landscape</b>	Semi-natural or heterogeneous landscape	74	9	13	52	[48, 50, 51, 55, 60, 63-65, 67, 68, 70, 73, 74, 88, 93, 102, 104, 109, 110, 120, 126, 135, 148, 151, 160, 174, 175, 177, 179-192, 196, 198, 208, 222-225]
	Less agricultural or homogenous landscape	32	7	4	21	[47, 48, 63, 66, 69, 128, 135, 151, 160, 172, 173, 185, 187, 192, 194, 224, 226-233]
<b>Organic farming in the landscape</b>	Organic farming in the landscape	4	0	0	4	[49, 62, 92]
<b>Linear features in the landscape</b>	Roads	4	2	0	2	[70, 80, 193]
	Edge habitat	8	0	2	6	[70, 80, 192-194]
	Ditches	1	0	0	1	[135]
<b>Proximity and connectivity to semi-natural habitat</b>	Semi-natural corridors	5	0	1	4	[107, 108, 195, 196, 234]
<b>Large habitat area</b>	Connected habitats	3	1	1	1	[235]
	Proximity to semi-natural habitat	14	0	6	8	[56, 66, 73, 105, 193, 198-200]
<b>Large habitat area</b>	Large habitat area	3	0	0	3	[60, 64, 190]

**Table E**

Raw evidence counts extracted from relevant articles returned in the literature search within the climate theme (n = 16). Each piece of evidence was categorised as “negative”, “neutral” or “positive” depending on the impact on pollinator populations. Shading represents the quantity of evidence recorded for each intervention, where darker shades represent a higher count. Specifically, no shading represents a count of 0, the lightest shade represents a count of 1, the light shade represents counts of 2–5, the dark shade represents counts of 6–20 and the darkest shade represents counts of 21 or higher [236].

Sub-theme	Intervention	Total	-	0	+	References
Warmer microclimate	Warmer microclimate	2	0	0	2	[71, 138]
Shelter	Shelter	6	0	1	5	[59, 61, 71, 150, 203, 236]
Microclimatic variation	Microclimatic variation	3	0	0	3	[204-206]
Climate warming	Climate warming	6	5	1	0	[99, 145, 207-209, 233]

**Table F**

The results of Chi-square goodness-of-fit tests undertaken on interventions affecting pollinators made up of evidence categorised as having a negative, neutral or positive impact. Grey shading indicates that evidence counts were not high enough for analysis to be performed.

Theme	Sub-theme	$\chi^2$	df	p
Foraging resources	Presence of flowering plants	115.98	2	<0.001
	Presence of hedgerow			
	Season-long access to resources	21.13	2	<0.001
	Sown vegetation	34.00	2	<0.001
Nesting, breeding and reproductive resources	Naturally established vegetation			
	Availability of floral resources			
	Proximity to resources			
	Presence of larval resources			
	Specific habitat features			
Site management	Nest site availability			
	Grazing	3.60	2	0.17
	Cutting			
	Removal of cut material			
	Mowing			
	Taller or structurally diverse vegetation	24.36	2	<0.001
	Agrochemical application	26.00	2	<0.001
Landscape and connectivity	Low intensity hedgerow management			
	Organic farming	14.80	2	<0.001
	Semi-natural or heterogeneous landscape	60.25	2	<0.001
	Organic farming in the landscape			
	Linear features in the landscape			
Climate	Proximity and connectivity to semi-natural habitat	9.91	2	0.007
	Large habitat area			
	Warmer microclimate			
	Shelter			
	Microclimatic variation			
	Climate warming			

## References

- [1] Edenhofer O, Pichs-Madruga R, Sokona Y, Seyboth K, Kadner S, Zwickel T, et al. Renewable energy sources and climate change mitigation: special report of the intergovernmental panel on climate change. Cambridge, United Kingdom and New York, NY, USA: Cambridge University Press; 2011.
- [2] IEA. Renewables 2019 analysis and forecast to 2024 executive summary. International Energy Agency; 2019.
- [3] IRENA. Future of Solar Photovoltaic: deployment, investment, technology, grid integration and socio-economic aspects (A Global Energy Transformation paper). Abu Dhabi: International Renewable Energy Agency; 2019.
- [4] SolarPower Europe. Global market outlook for solar power 2019 - 2023. SolarPower Europe; 2019.
- [5] STA. The natural capital value of solar. Solar Trade Association; 2019.
- [6] BRE. Agricultural good practice for solar farms. BRE National Solar Centre; 2014.
- [7] Allison TD, Root TL, Frumhoff PC. Thinking globally and siting locally—renewable energy and biodiversity in a rapidly warming world. *Climatic Change* 2014;126(1–2):1–6.
- [8] Armstrong A, Ostle NJ, Whitaker J. Solar park microclimate and vegetation management effects on grassland carbon cycling. *Environ Res Lett* 2016;11(7):074016.
- [9] Armstrong A, Waldron S, Whitaker J, Ostle NJ. Wind farm and solar park effects on plant–soil carbon cycling: uncertain impacts of changes in ground-level microclimate. *Global Change Biol* 2014;20(6):1699–706.
- [10] Hernandez RR, Easter S, Murphy-Mariscal ML, Maestre FT, Tavassoli M, Allen EB, et al. Environmental impacts of utility-scale solar energy. *Renew Sustain Energy Rev* 2014;29:766–79.
- [11] IPBES. Global assessment report on biodiversity and ecosystem services. Bonn, Germany: Intergovernmental Science-Policy Platform on Biodiversity and Ecosystem Services; 2019.
- [12] Cameron DR, Cohen BS, Morrison SA. An approach to enhance the conservation-compatibility of solar energy development. *PLoS One* 2012;7(6):e38437.
- [13] Randle-Boggis R, White PCL, Cruz J, Parker G, Montag H, Scurluck J, et al. Realising co-benefits for natural capital and ecosystem services from solar parks: a co-developed, evidence-based approach. *Renew Sustain Energy Rev* 2020;125:109775.
- [14] Lovich JE, Ennen JR. Wildlife conservation and solar energy development in the desert southwest, United States. *Bioscience* 2011;61(12):982–92.
- [15] Rehbein JA, Watson JE, Lane JL, Sonter LJ, Venter O, Atkinson SC, et al. Renewable energy development threatens many globally important biodiversity areas. *Global Change Biol* 2020.
- [16] BRE BRE. National solar centre biodiversity guidance for solar developments. BRE National Solar Centre; 2014.
- [17] Walston LJ, Mishra SK, Hartmann HM, Hlohowskyj I, McCall J, Macknick J. Examining the potential for agricultural benefits from pollinator habitat at solar facilities in the United States. *Environ Sci Technol* 2018;52(13):7566–76.



- [18] Semeraro T, Pomes A, Del Giudice C, Negro D, Aretano R. Planning ground based utility scale solar energy as green infrastructure to enhance ecosystem services. *Energy Pol* 2018;117:218–27.
- [19] IPBES. The assessment report of the Intergovernmental Science-Policy Platform on Biodiversity and Ecosystem Services on pollinators, pollination and food production. Bonn, Germany: Secretariat of the Intergovernmental Science-Policy Platform on Biodiversity and Ecosystem Services; 2016.
- [20] Potts SG, Imperatriz-Fonseca V, Ngo HT, Aizen MA, Biesmeijer JC, Breeze TD, et al. Safeguarding pollinators and their values to human well-being. *Nature* 2016;540:220.
- [21] Klein A-M, Vaissiere BE, Cane JH, Steffan-Dewenter I, Cunningham SA, Kremen C, et al. Importance of pollinators in changing landscapes for world crops. *Proc Biol Sci* 2006;274(1608):303–13.
- [22] Biesmeijer JC, Roberts SP, Reemer M, Ohlemüller R, Edwards M, Peeters T, et al. Parallel declines in pollinators and insect-pollinated plants in Britain and The Netherlands. *Science* 2006;313(5785):351–4.
- [23] Carvalheiro LG, Kunin WE, Keil P, Aguirre-Gutiérrez J, Ellis WN, Fox R, et al. Species richness declines and biotic homogenisation have slowed down for NW-European pollinators and plants. *Ecol Lett* 2013;16(7):870–8.
- [24] Powney GD, Carvell C, Edwards M, Morris RKA, Roy HE, Woodcock BA, et al. Widespread losses of pollinating insects in Britain. *Nat Commun* 2019;10.
- [25] Ollerton J, Erenler H, Edwards M, Crockett R. Extinctions of aculeate pollinators in Britain and the role of large-scale agricultural changes. *Science* 2014;346(6215):1360–2.
- [26] Sánchez-Bayo F, Wyckhuys KA. Worldwide decline of the entomofauna: a review of its drivers. *Biol Conserv* 2019;232:8–27.
- [27] Potts SG, Biesmeijer JC, Kremen C, Neumann P, Schweiger O, Kunin WE. Global pollinator declines: trends, impacts and drivers. *Trends Ecol Evol* 2010;25(6):345–53.
- [28] Desneux N, Decourtye A, Delpuech J-M. The sublethal effects of pesticides on beneficial arthropods. *Annu Rev Entomol* 2007;52:81–106.
- [29] Gabriel D, Tschamtké T. Insect pollinated plants benefit from organic farming. *Agric Ecosyst Environ* 2007;118(1–4):43–8.
- [30] Seibold S, Gossner MM, Simons NK, Blüthgen N, Müller J, Ambarlı D, et al. Arthropod decline in grasslands and forests is associated with landscape-level drivers. *Nature* 2019;574(7780):671–4.
- [31] Settele J, Bishop J, Potts SG. Climate change impacts on pollination. *Nature Plants* 2016;2(7):16092.
- [32] Harvey JA, Heinen R, Armbrrecht I, Basset Y, Baxter-Gilbert JH, Bezemer TM, et al. International scientists formulate a roadmap for insect conservation and recovery. *Nature Ecology & Evolution* 2020:1–3.
- [33] Ministry of Housing, Communities & local government. National Planning Policy Framework; 2019.
- [34] Defra A. Green future: our 25 Year plan to improve the environment. Department for Environment, Food & Rural Affairs; 2019.
- [35] United Nations. Transforming our world: the 2030 agenda for sustainable development. United Nations; 2015.
- [36] Collins A, Coughlin D, Miller J, Kirk S. The production of quick scoping reviews and rapid evidence assessments: a how to guide. 2015.
- [37] Larson B, Kevan P, Inouye DW. Flies and flowers: taxonomic diversity of anthophiles and pollinators. *Can Entomol* 2001;133(4):439–65.
- [38] Jennersten O. Flower visitation and pollination efficiency of some North European butterflies. *Oecologia* 1984;63(1):80–9.
- [39] Thomas J. Monitoring change in the abundance and distribution of insects using butterflies and other indicator groups. *Phil Trans Biol Sci* 2005;360(1454):339–57.
- [40] Rader R, Bartomeus I, Garibaldi LA, Garratt MP, Howlett BG, Winfree R, et al. Non-bee insects are important contributors to global crop pollination. *Proc Natl Acad Sci Unit States Am* 2016;113(1):146–51.
- [41] Gardener M. Statistics for ecologists using R and excel: data collection, exploration, analysis and presentation. Pelagic Publishing Ltd; 2017.
- [42] Price PW. Insect ecology. John Wiley & Sons; 1997.
- [43] Rotheray GE, Gilbert F. The natural history of hoverflies. Forrest Text; 2011.
- [44] Bartual AM, Sutter L, Bocci G, Moonen AC, Cresswell J, Entling M, et al. The potential of different semi-natural habitats to sustain pollinators and natural enemies in European agricultural landscapes. *Agric Ecosyst Environ* 2019;279:43–52.
- [45] Croxton PJ, Carvell C, Mountford JO, Sparks TH. A comparison of green lanes and field margins as bumblebee habitat in an arable landscape. *Biol Conserv* 2002;107(3):365–74.
- [46] Fowler RE, Rotheray EL, Goulson D. Floral abundance and resource quality influence pollinator choice. *Insect Conservation and Diversity* 2016;9(6):481–94.
- [47] Heard MS, Carvell C, Carreck NL, Rothery P, Osborne JL, Bourke AFG. Landscape context not patch size determines bumble-bee density on flower mixtures sown for agri-environment schemes. *Biol Lett* 2007;3(6):638–41.
- [48] Holland JM, Smith BM, Storkey J, Lutman PJW, Aebischer NJ. Managing habitats on English farmland for insect pollinator conservation. *Biol Conserv* 2015;182:215–22.
- [49] Holzschuh A, Steffan-Dewenter I, Tschamtké T. Agricultural landscapes with organic crops support higher pollinator diversity. *Oikos* 2008;117(3):354–61.
- [50] Kamper W, Werner PK, Hilpert A, Westphal C, Blüthgen N, Eltz T, et al. How landscape, pollen intake and pollen quality affect colony growth in *Bombus terrestris*. *Landsc Ecol* 2016;31(10):2245–58.
- [51] Kleijn D, van Langevelde F. Interacting effects of landscape context and habitat quality on flower visiting insects in agricultural landscapes. *Basic Appl Ecol* 2006;7(3):201–14.
- [52] Milberg P, Bergman KO, Cronvall E, Eriksson AI, Glimskar A, Islamovic A, et al. Flower abundance and vegetation height as predictors for nectar-feeding insect occurrence in Swedish semi-natural grasslands. *Agric Ecosyst Environ* 2016;230:47–54.
- [53] Pywell RF, Meek WR, Hulmes L, Hulmes S, James KL, Nowakowski M, et al. Management to enhance pollen and nectar resources for bumblebees and butterflies within intensively farmed landscapes. *J Insect Conserv* 2011;15(6):853–64.
- [54] Pywell RF, Warman EA, Carvell C, Sparks TH, Dicks LV, Bennett D, et al. Providing foraging resources for bumblebees in intensively farmed landscapes. *Biol Conserv* 2005;121(4):479–94.
- [55] Scheper J, Bommarco R, Holzschuh A, Potts SG, Riedinger V, Roberts SPM, et al. Local and landscape-level floral resources explain effects of wildflower strips on wild bees across four European countries. *J Appl Ecol* 2015;52(5):1165–75.
- [56] Kohler F, Verhulst J, van Klink R, Kleijn D. At what spatial scale do high-quality habitats enhance the diversity of forbs and pollinators in intensively farmed landscapes? *J Appl Ecol* 2008;45(3):753–62.
- [57] Woodcock BA, Savage J, Bullock JM, Nowakowski M, Orr R, Tallwin JRB, et al. Enhancing floral resources for pollinators in productive agricultural grasslands. *Biol Conserv* 2014;171:44–51.
- [58] Buhk C, Oppermann R, Schanowski A, Bleil R, Ludemann J, Maus C. Flower strip networks offer promising long term effects on pollinator species richness in intensively cultivated agricultural areas. *BMC Ecol* 2018;18.
- [59] Dover J, Sparks T, Clarke S, Gobbett K, Glossop S. Linear features and butterflies: the importance of green lanes. *Agric Ecosyst Environ* 2000;80(3):227–42.
- [60] Ockinger E, Smith HG. Landscape composition and habitat area affects butterfly species richness in semi-natural grasslands. *Oecologia* 2006;149(3):526–34.
- [61] Pywell RF, Warman EA, Sparks TH, Greatorex-Davies JN, Walker KJ, Meek WR, et al. Assessing habitat quality for butterflies on intensively managed arable farmland. *Biol Conserv* 2004;118(3):313–25.
- [62] Rundlof M, Bengtsson J, Smith HG. Local and landscape effects of organic farming on butterfly species richness and abundance. *J Appl Ecol* 2008;45(3):813–20.
- [63] Jonsson AM, Ekroos J, Danhardt J, Andersson GKS, Olsson O, Smith HG. Sown flower strips in southern Sweden increase abundances of wild bees and hoverflies in the wider landscape. *Biol Conserv* 2015;184:51–8.
- [64] Meyer B, Jauker F, Steffan-Dewenter I. Contrasting resource-dependent responses of hoverfly richness and density to landscape structure. *Basic Appl Ecol* 2009;10(2):178–86.
- [65] Power EF, Jackson Z, Stout JC. Organic farming and landscape factors affect abundance and richness of hoverflies (Diptera, Syrphidae) in grasslands. *Insect Conservation and Diversity* 2016;9(3):244–53.
- [66] Grass I, Albrecht J, Jauker F, Diekötter T, Warzecha D, Wolters V, et al. Much more than bees-Wildflower plantings support highly diverse flower-visitor communities from complex to structurally simple agricultural landscapes. *Agric Ecosyst Environ* 2016;225:45–53.
- [67] Holzschuh A, Steffan-Dewenter I, Kleijn D, Tschamtké T. Diversity of flower-visiting bees in cereal fields: effects of farming system, landscape composition and regional context. *J Appl Ecol* 2007;44(1):41–9.
- [68] Nayak GK, Roberts SPM, Garratt M, Breeze TD, Tschulin T, Harrison-Cripps J, et al. Interactive effect of floral abundance and semi-natural habitats on pollinators in field beans (*Vicia faba*). *Agric Ecosyst Environ* 2015;199:58–66.
- [69] Rundlof M, Andersson GKS, Bommarco R, Fries I, Hederstrom V, Herbertsson L, et al. Seed coating with a neonicotinoid insecticide negatively affects wild bees. *Nature* 2015;521(7550):77–U162.
- [70] Sjödin NE, Bengtsson J, Ekbohm B. The influence of grazing intensity and landscape composition on the diversity and abundance of flower-visiting insects. *J Appl Ecol* 2008;45(3):763–72.
- [71] Dover JW. Factors affecting the distribution of satyrid butterflies on arable farmland. *J Appl Ecol* 1996;33(4):723–34.
- [72] Feltham H, Park K, Minderman J, Goulson D. Experimental evidence that wildflower strips increase pollinator visits to crops. *Ecology and Evolution* 2015;5(16):3523–30.
- [73] Ockinger E, Smith HG. Semi-natural grasslands as population sources for pollinating insects in agricultural landscapes. *J Appl Ecol* 2007;44(1):50–9.
- [74] Schirmel J, Albrecht M, Bauer PM, Sutter L, Pfister SC, Entling MH. Landscape complexity promotes hoverflies across different types of semi-natural habitats in farmland. *J Appl Ecol* 2018;55(4):1747–58.
- [75] Wood TJ, Holland JM, Goulson D. Pollinator-friendly management does not increase the diversity of farmland bees and wasps. *Biol Conserv* 2015;187:120–6.
- [76] Frund J, Linsenmair KE, Blüthgen N. Pollinator diversity and specialization in relation to flower diversity. *Oikos* 2010;119(10):1581–90.
- [77] Dance C, Botias C, Goulson D. The combined effects of a monotonous diet and exposure to thiamethoxam on the performance of bumblebee micro-colonies. *Ecotoxicol Environ Saf* 2017;139:194–201.
- [78] Ebeling A, Klein AM, Schumacher J, Weisser WW, Tschamtké T. How does plant richness affect pollinator richness and temporal stability of flower visits? *Oikos* 2008;117(12):1808–15.
- [79] Goulson D, Hughes WOH, Derwent LC, Stout JC. Colony growth of the bumblebee, *Bombus terrestris*, in improved and conventional agricultural and suburban habitats. *Oecologia* 2002;130(2):267–73.
- [80] Kallioniemi E, Astrom J, Rusch GM, Dahle S, Astrom S, Gjershaug JO. Local resources, linear elements and mass-flowering crops determine bumblebee occurrences in moderately intensified farmlands. *Agric Ecosyst Environ* 2017;239:90–100.

- [81] Potts SG, Woodcock BA, Roberts SPM, Tscheulin T, Pilgrim ES, Brown VK, et al. Enhancing pollinator biodiversity in intensive grasslands. *J Appl Ecol* 2009;46(2): 369–79.
- [82] Woodcock BA, Potts SG, Tscheulin T, Pilgrim E, Ramsey AJ, Harrison-Cripps J, et al. Responses of invertebrate trophic level, feeding guild and body size to the management of improved grassland field margins. *J Appl Ecol* 2009;46(4):920–9.
- [83] Gathmann A, Greiler HJ, Tschamtko T. Trap-nesting bees and wasps colonizing set-aside fields – succession and body-size, management by cutting and sowing. *Oecologia* 1994;98(1):8–14.
- [84] Croxton PJ, Hann JP, Greatorex-Davies JN, Sparks TH. Linear hotspots? The floral and butterfly diversity of green lanes. *Biol Conserv* 2005;121(4):579–84.
- [85] Field RG, Gardiner T, Mason CF, Hill J. Countryside stewardship scheme and butterflies: a study of plant and butterfly species richness. *Biodivers Conserv* 2006;15(1):443–52.
- [86] Ockinger E, Eriksson AK, Smith HG. Effects of grassland abandonment, restoration and management on butterflies and vascular plants. *Biol Conserv* 2006;133(3):291–300.
- [87] Sparks TH, Parish T. Factors affecting the abundance of butterflies in-field boundaries in Swavesey Fens, Cambridgeshire, UK. *Biol Conserv* 1995;73(3): 221–7.
- [88] Wix N, Reich M, Schaarschmidt F. Butterfly richness and abundance in flower strips and field margins: the role of local habitat quality and landscape context. *Heliyon* 2019;5(5).
- [89] Amy C, Noel G, Hatt S, Uyttenbroeck R, Van de Meutter F, Genoud D, et al. Flower strips in wheat intercropping system: effect on pollinator abundance and diversity in Belgium. *Insects* 2018;9(3).
- [90] Lucas A, Bull JC, de Vere N, Neyland PJ, Forman DW. Flower resource and land management drives hoverfly communities and bee abundance in seminatural and agricultural grasslands. *Ecology and Evolution* 2017;7(19):8073–86.
- [91] Balfour NJ, Ollerton J, Castellanos MC, Ratnieks FLW. British phenological records indicate high diversity and extinction rates among late-summer-flying pollinators. *Biol Conserv* 2018;222:278–83.
- [92] Lichtenberg EM, Kennedy CM, Kremen C, Batary P, Berendse F, Bommarco R, et al. A global synthesis of the effects of diversified farming systems on arthropod diversity within fields and across agricultural landscapes. *Global Change Biol* 2017;23(11):4946–57.
- [93] Rollin O, Perez-Mendez N, Bretagnolle V, Henry M. Preserving habitat quality at local and landscape scales increases wild bee diversity in intensive farming systems. *Agric Ecosyst Environ* 2019;275:73–80.
- [94] Scheper J, Holzschuh A, Kuussaari M, Potts SG, Rundlof M, Smith HG, et al. Environmental factors driving the effectiveness of European agri-environmental measures in mitigating pollinator loss - a meta-analysis. *Ecol Lett* 2013;16(7): 912–20.
- [95] Warzecha D, Diekötter T, Wolters V, Jauker F. Attractiveness of wildflower mixtures for wild bees and hoverflies depends on some key plant species. *Insect Conservation and Diversity* 2018;11(1):32–41.
- [96] Vellend M. Effects of diversity on diversity: consequences of competition and facilitation. *Oikos* 2008;117(7):1075–85.
- [97] Carrie RJG, George DR, Wackers FL. Selection of floral resources to optimise conservation of agriculturally-functional insect groups. *J Insect Conserv* 2012;16 (4):635–40.
- [98] de Vere N, Jones LE, Gilmore T, Moscrop J, Lowe A, Smith D, et al. Using DNA metabarcoding to investigate honey bee foraging reveals limited flower use despite high floral availability. *Sci Rep* 2017;7.
- [99] Vanderplanck M, Martinet B, Carvalho LG, Rasmont P, Barraud A, Renaudeau C, et al. Ensuring access to high-quality resources reduces the impacts of heat stress on bees. *Sci Rep* 2019;9.
- [100] Rollin O, Bretagnolle V, Decourtye A, Aptel J, Michel N, Vaissiere BE, et al. Differences of floral resource use between honey bees and wild bees in an intensive farming system. *Agric Ecosyst Environ* 2013;179:78–86.
- [101] Hanley ME, Awbi AJ, Franco M. Going native? Flower use by bumblebees in English urban gardens. *Ann Bot* 2014;113(5):799–806.
- [102] Sybertz J, Matthies S, Schaarschmidt F, Reich M, von Haaren C. Assessing the value of field margins for butterflies and plants: how to document and enhance biodiversity at the farm scale. *Agric Ecosyst Environ* 2017;249:165–76.
- [103] Donkersley P. Trees for bees. *Agric Ecosyst Environ* 2019;270:79–83.
- [104] Garratt MPD, Senapathi D, Coston DJ, Mortimer SR, Potts SG. The benefits of hedgerows for pollinators and natural enemies depends on hedge quality and landscape context. *Agric Ecosyst Environ* 2017;247:363–70.
- [105] Merckx T, Berwaerts K. What type of hedgerows do Brown hairstreak (*Thecla betulae* L.) butterflies prefer? Implications for European agricultural landscape conservation. *Insect Conservation and Diversity* 2010;3(3):194–204.
- [106] Osborne JL, Martin AP, Shortall CR, Todd AD, Goulson D, Knight ME, et al. Quantifying and comparing bumblebee nest densities in gardens and countryside habitats. *J Appl Ecol* 2008;45(3):784–92.
- [107] Cranmer L, McCollin D, Ollerton J. Landscape structure influences pollinator movements and directly affects plant reproductive success. *Oikos* 2012;121(4): 562–8.
- [108] Haenke S, Kovacs-Hostyanszki A, Frund J, Batary P, Jauker B, Tschamtko T, et al. Landscape configuration of crops and hedgerows drives local syrphid fly abundance. *J Appl Ecol* 2014;51(2):505–13.
- [109] Carrie R, Ekroos J, Smith HG. Organic farming supports spatiotemporal stability in species richness of bumblebees and butterflies. *Biol Conserv* 2018;227:48–55.
- [110] Persson AS, Smith HG. Seasonal persistence of bumblebee populations is affected by landscape context. *Agric Ecosyst Environ* 2013;165:201–9.
- [111] Rundlof M, Persson AS, Smith HG, Bommarco R. Late-season mass-flowering red clover increases bumble bee queen and male densities. *Biol Conserv* 2014;172: 138–45.
- [112] Timberlake TP, Vaughan IP, Memmott J. Phenology of farmland floral resources reveals seasonal gaps in nectar availability for bumblebees. *J Appl Ecol* 2019;56 (7):1585–96.
- [113] Dainese M, Riedinger V, Holzschuh A, Kleijn D, Scheper J, Steffan-Dewenter I. Managing trap-nesting bees as crop pollinators: spatiotemporal effects of floral resources and antagonists. *J Appl Ecol* 2018;55(1):195–204.
- [114] Persson AS, Mazier F, Smith HG. When beggars are choosers? How nesting of a solitary bee is affected by temporal dynamics of pollen plants in the landscape. *Ecology and Evolution* 2018;8(11):5777–91.
- [115] Requier F, Odoux JF, Tamic T, Moreau N, Henry M, Decourtye A, et al. Honey bee diet in intensive farmland habitats reveals an unexpectedly high flower richness and a major role of weeds. *Ecol Appl* 2015;25(4):881–90.
- [116] Wintermantel D, Odoux JF, Chadouef J, Bretagnolle V. Organic farming positively affects honeybee colonies in a flower-poor period in agricultural landscapes. *J Appl Ecol* 2019;56(8):1960–9.
- [117] Blake RJ, Woodcock BA, Westbury DB, Sutton P, Potts SG. New tools to boost butterfly habitat quality in existing grass buffer strips. *J Insect Conserv* 2011;15 (1–2):221–32.
- [118] Carvell C, Meek WR, Pywell RF, Goulson D, Nowakowski M. Comparing the efficacy of agri-environment schemes to enhance bumble bee abundance and diversity on arable field margins. *J Appl Ecol* 2007;44(1):29–40.
- [119] Carvell C, Meek WR, Pywell RF, Nowakowski M. The response of foraging bumblebees to successional change in newly created arable field margins. *Biol Conserv* 2004;118(3):327–39.
- [120] Carvell C, Osborne JL, Bourke AFG, Freeman SN, Pywell RF, Heard MS. Bumble bee species' responses to a targeted conservation measure depend on landscape context and habitat quality. *Ecol Appl* 2011;21(5):1760–71.
- [121] Feber RE, Smith H, Macdonald DW. The effects on butterfly abundance of the management of uncropped edges of arable fields. *J Appl Ecol* 1996;33(5): 1191–205.
- [122] Haaland C, Gyllin M. Butterflies and bumblebees in greenways and sown wildflower strips in southern Sweden. *J Insect Conserv* 2010;14(2):125–32.
- [123] Meek B, Loxton D, Sparks T, Pywell R, Pickett H, Nowakowski M. The effect of arable field margin composition on invertebrate biodiversity. *Biol Conserv* 2002; 106(2):259–71.
- [124] Ouvrard P, Jacquemart AL. Agri-environment schemes targeting farmland bird populations also provide food for pollinating insects. *Agric For Entomol* 2018;20 (4):558–74.
- [125] Ouvrard P, Transon J, Jacquemart AL. Flower-strip agri-environment schemes provide diverse and valuable summer flower resources for pollinating insects. *Biodivers Conserv* 2018;27(9):2193–216.
- [126] Pywell RF, Warman EA, Hulmes L, Hulmes S, Nuttall P, Sparks TH, et al. Effectiveness of new agri-environment schemes in providing foraging resources for bumblebees in intensively farmed landscapes. *Biol Conserv* 2006;129(2): 192–206.
- [127] Wood TJ, Holland JM, Hughes WOH, Goulson D. Targeted agri-environment schemes significantly improve the population size of common farmland bumblebee species. *Mol Ecol* 2015;24(8):1668–80.
- [128] Carvell C, Bourke AFG, Osborne JL, Heard MS. Effects of an agri-environment scheme on bumblebee reproduction at local and landscape scales. *Basic Appl Ecol* 2015;16(6):519–30.
- [129] Kells AR, Holland JM, Goulson D. The value of uncropped field margins for foraging bumblebees. *J Insect Conserv* 2001;5(4):283–91.
- [130] Field RG, Gardiner T, Mason CF, Hill J. Agri-environment schemes and butterflies: the utilisation of 6 m grass margins. *Biodivers Conserv* 2005;14(8):1969–76.
- [131] Goulson D, Lepais O, O'Connor S, Osborne JL, Sanderson RA, Cussans J, et al. Effects of land use at a landscape scale on bumblebee nest density and survival. *J Appl Ecol* 2010;47(6):1207–15.
- [132] Knight ME, Osborne JL, Sanderson RA, Hale RJ, Martin AP, Goulson D. Bumblebee nest density and the scale of available forage in arable landscapes. *Insect Conservation and Diversity* 2009;2(2):116–24.
- [133] Everaars J, Settele J, Dormann CF. Fragmentation of nest and foraging habitat affects time budgets of solitary bees, their fitness and pollination services, depending on traits: results from an individual-based model. *PLoS One* 2018;13 (2).
- [134] Carrie R, Andrieu E, Cunningham SA, Lentini PE, Loreau M, Ouin A. Relationships among ecological traits of wild bee communities along gradients of habitat amount and fragmentation. *Ecography* 2017;40(1):85–97.
- [135] Diekötter T, Walther-Hellwig K, Conradi M, Suter M, Suter M, Frankl R. Effects of landscape elements on the distribution of the rare bumblebee species *Bombus muscorum* in an agricultural landscape. *Biodivers Conserv* 2006;15(1):57–68.
- [136] Saville NM, Dramstad WE, Fry GLA, Corbet SA. Bumblebee movement in a fragmented agricultural landscape. *Agric Ecosyst Environ* 1997;61(2–3):145–54.
- [137] Walther-Hellwig K, Frankl R. Foraging habitats and foraging distances of bumblebees, *Bombus* spp. (Hym., apidae), in an agricultural landscape. *J Appl Entomol* 2000;124(7–8):299–306.
- [138] Clausen HD, Holbeck HB, Reddersen J. Factors influencing abundance of butterflies and burnet moths in the uncultivated habitats of an organic farm in Denmark. *Biol Conserv* 2001;98(2):167–78.
- [139] Kells AR, Goulson D. Preferred nesting sites of bumblebee queens (Hymenoptera: apidae) in agroecosystems in the UK. *Biol Conserv* 2003;109(2):165–74.

- [140] Lye GC, Park K, Osborne J, Holland J, Goulson D. Assessing the value of Rural Stewardship schemes for providing foraging resources and nesting habitat for bumblebee queens (Hymenoptera: apidae). *Biol Conserv* 2009;142(10):2023–32.
- [141] Svensson B, Lagerlof J, Svensson BG. Habitat preferences of nest-seeking bumble bees (Hymenoptera : apidae) in an agricultural landscape. *Agric Ecosyst Environ* 2000;77(3):247–55.
- [142] Carrie R, Lopes M, Ouin A, Andrieu E. Bee diversity in crop fields is influenced by remotely-sensed nesting resources in surrounding permanent grasslands. *Ecol Indic* 2018;90:606–14.
- [143] Steffan-Dewenter I, Schiele S. Do resources or natural enemies drive bee population dynamics in fragmented habitats? *Ecology* 2008;89(5):1375–87.
- [144] Dauber J, Hirsch M, Simmering D, Waldhardt R, Otte A, Wolters V. Landscape structure as an indicator of biodiversity: matrix effects on species richness. *Agric Ecosyst Environ* 2003;98(1–3):321–9.
- [145] Lye GC, Park KJ, Holland JM, Goulson D. Assessing the efficacy of artificial domiciles for bumblebees. *J Nat Conserv* 2011;19(3):154–60.
- [146] Kruess A, Tschamtk T. Grazing intensity and the diversity of grasshoppers, butterflies, and trap-nesting bees and wasps. *Conserv Biol* 2002;16(6):1570–80.
- [147] Wallis De Vries MF, Parkinson AE, Dulphy JP, Sayer M, Diana E. Effects of livestock breed and grazing intensity on biodiversity and production in grazing systems. 4. Effects on animal diversity. *Grass Forage Sci* 2007;62(2):185–97.
- [148] Le Feon V, Schermann-Legionnet A, Delettire Y, Aviron S, Billeter R, Bugter R, et al. Intensification of agriculture, landscape composition and wild bee communities: a large scale study in four European countries. *Agric Ecosyst Environ* 2010;137(1–2):143–50.
- [149] Osgathorpe LM, Park K, Goulson D. The use of off-farm habitats by foraging bumblebees in agricultural landscapes: implications for conservation management. *Apidologie* 2012;43(2):113–27.
- [150] Byrne F, delBarco-Trillo J. The effect of management practices on bumblebee densities in hedgerow and grassland habitats. *Basic Appl Ecol* 2019;35:28–33.
- [151] Van Halder I, Thierry M, Villemey A, Ouin A, Archaux F, Barbaro L, et al. Trait-driven responses of grassland butterflies to habitat quality and matrix composition in mosaic agricultural landscapes. *Insect Conservation and Diversity* 2017;10(1):64–77.
- [152] Aguirre-Gutierrez J, WallisDeVries MF, Marshall L, van't Zelfde M, Villalobos-Arambula AR, Boekelo B, et al. Butterflies show different functional and species diversity in relationship to vegetation structure and land use. *Global Ecol Biogeogr* 2017;26(10):1126–37.
- [153] Fornoff F, Klein AM, Hartig F, Benadi G, Venjakob C, Schaefer HM, et al. Functional flower traits and their diversity drive pollinator visitation. *Oikos* 2017;126(7):1020–30.
- [154] Venjakob C, Klein AM, Ebeling A, Tschamtk T, Scherber C. Plant diversity increases spatio-temporal niche complementarity in plant-pollinator interactions. *Ecology and Evolution* 2016;6(8):2249–61.
- [155] Evans AN, Llanos JEM, Kunin WE, Evison SEF. Indirect effects of agricultural pesticide use on parasite prevalence in wild pollinators. *Agric Ecosyst Environ* 2018;258:40–8.
- [156] de Snoo GR, van der Poll RJ, Bertels J. Butterflies in sprayed and unsprayed field margins. *Journal of Applied Entomology-Zeitschrift Fur Angewandte Entomologie*. 1998;122(4):157–61.
- [157] Gilbert AS, Bunnefeld N, Wilson JM, Botham MS, Brereton TM, Fox R, et al. Are neonicotinoid insecticides driving declines of widespread butterflies? *PeerJ* 2015; 3.
- [158] Rands MRW, Sotherton NW. Pesticide use on cereal crops and changes in the abundance of butterflies on arable farmland in England. *Biol Conserv* 1986;36(1): 71–82.
- [159] de Snoo GR. Unsprayed field margins: effects on environment, biodiversity and agricultural practice. *Landsc Urban Plann* 1999;46(1–3):151–60.
- [160] Luscher G, Jeanneret P, Schneider MK, Turnbull LA, Arndorfer M, Balazs K, et al. Responses of plants, earthworms, spiders and bees to geographic location, agricultural management and surrounding landscape in European arable fields. *Agric Ecosyst Environ* 2014;186:124–34.
- [161] Woodcock BA, Isaac NJB, Bullock JM, Roy DB, Garthwaite DG, Crowe A, et al. Impacts of neonicotinoid use on long-term population changes in wild bees in England. *Nat Commun* 2016;7.
- [162] Arce AN, David TI, Randall EL, Rodrigues AR, Colgan TJ, Wurm Y, et al. Impact of controlled neonicotinoid exposure on bumblebees in a realistic field setting. *J Appl Ecol* 2017;54(4):1199–208.
- [163] Budge GE, Garthwaite D, Crowe A, Boatman ND, Delaplane KS, Brown MA, et al. Evidence for pollinator cost and farming benefits of neonicotinoid seed coatings on oilseed rape. *Sci Rep* 2015;5.
- [164] Jin NX, Klein S, Leimig F, Bischoff G, Menzel R. The neonicotinoid clothianidin interferes with navigation of the solitary bee *Osmia cornuta* in a laboratory test. *J Exp Biol* 2015;218(18):2821–5.
- [165] Kenna D, Cooley H, Pretelli I, Rodrigues AR, Gill SD, Gill RJ. Pesticide exposure affects flight dynamics and reduces flight endurance in bumblebees. *Ecology and Evolution* 2019;9(10):5637–50.
- [166] Dramstad W, Fry G. Foraging activity of bumblebees (*Bombus*) in relation to flower resources on arable land. *Agric Ecosyst Environ* 1995;53(2):123–35.
- [167] Kurze S, Heinken T, Fartmann T. Nitrogen enrichment in host plants increases the mortality of common Lepidoptera species. *Oecologia* 2018;188(4):1227–37.
- [168] Rajaniemi TK. Why does fertilization reduce plant species diversity? Testing three competition-based hypotheses. *J Ecol* 2002;90(2):316–24.
- [169] Kurze S, Heinken T, Fartmann T. Nitrogen enrichment of host plants has mostly beneficial effects on the life-history traits of nettle-feeding butterflies. *Acta Oecologica-International Journal of Ecology* 2017;85:157–64.
- [170] Staley JT, Botham MS, Chapman RE, Amy SR, Heard MS, Hulmes L, et al. Little and late: how reduced hedgerow cutting can benefit Lepidoptera. *Agric Ecosyst Environ* 2016;224:22–8.
- [171] Feber RE, Johnson PJ, Firbank LG, Hopkins A, Macdonald DW. A comparison of butterfly populations on organically and conventionally managed farmland. *J Zool* 2007;273(1):30–9.
- [172] Jonason D, Andersson GKS, Ockinger E, Rundlof M, Smith HG, Bengtsson J. Assessing the effect of the time since transition to organic farming on plants and butterflies. *J Appl Ecol* 2011;48(3):543–50.
- [173] Jonason D, Andersson GKS, Ockinger E, Smith HG, Bengtsson J. Field scale organic farming does not counteract landscape effects on butterfly trait composition. *Agric Ecosyst Environ* 2012;158:66–71.
- [174] Rundlof M, Smith HG. The effect of organic farming on butterfly diversity depends on landscape context. *J Appl Ecol* 2006;43(6):1121–7.
- [175] Andersson GKS, Birkhofer K, Rundlof M, Smith HG. Landscape heterogeneity and farming practice alter the species composition and taxonomic breadth of pollinator communities. *Basic Appl Ecol* 2013;14(7):540–6.
- [176] Batary P, Baldi A, Kleijn D, Tschamtk T. Landscape-moderated biodiversity effects of agri-environmental management: a meta-analysis. *Proc Biol Sci* 2011; 278(1713):1894–902.
- [177] Gonthier DJ, Ennis KK, Farinas S, Hsieh HY, Iverson AL, Batary P, et al. Biodiversity conservation in agriculture requires a multi-scale approach. In: *Proceedings of the royal society B-biological sciences*, vol. 281; 2014. 1791.
- [178] Hardman CJ, Norris K, Nevard TD, Hughes B, Potts SG. Delivery of floral resources and pollination services on farmland under three different wildlife-friendly schemes. *Agric Ecosyst Environ* 2016;220:142–51.
- [179] Soderman AME, Street TI, Hall K, Olsson O, Prentice HC, Smith HG. The value of small arable habitats in the agricultural landscape: importance for vascular plants and the provisioning of floral resources for bees. *Ecol Indic* 2018;84:553–63.
- [180] Berg A, Cronvall E, Eriksson A, Glimskar A, Hiron M, Knap J, et al. Assessing agri-environmental schemes for semi-natural grasslands during a 5-year period: can we see positive effects for vascular plants and pollinators? *Biodivers Conserv* 2019.
- [181] Bukovinsky T, Verheijen J, Zwerver S, Klop E, Biesmeijer JC, Wackers FL, et al. Exploring the relationships between landscape complexity, wild bee species richness and reproduction, and pollination services along a complexity gradient in The Netherlands. *Biol Conserv* 2017;214:312–9.
- [182] Le Feon V, Burel F, Chifflet R, Henry M, Ricroc A, Vaissiere BE, et al. Solitary bee abundance and species richness in dynamic agricultural landscapes. *Agric Ecosyst Environ* 2013;166:94–101.
- [183] Hardman CJ, Harrison DPG, Shaw PJ, Nevard TD, Hughes B, Potts SG, et al. Supporting local diversity of habitats and species on farmland: a comparison of three wildlife-friendly schemes. *J Appl Ecol* 2016;53(1):171–80.
- [184] Soderman AME, Ekroos J, Hedlund K, Olsson O, Smith HG. Contrasting effects of field boundary management on three pollinator groups. *Insect Conservation and Diversity* 2016;9(5):427–37.
- [185] Archaux F, Lorel C, Villemey A. Landscape drivers of butterfly and burnet moth diversity in lowland rural areas. *Landsc Ecol* 2018;33(10):1725–39.
- [186] Bergman KO, Asklung J, Ekberg O, Ignell H, Wahlman H, Milberg P. Landscape effects on butterfly assemblages in an agricultural region. *Ecography* 2004;27(5): 619–28.
- [187] Bergman KO, Daniel-Ferreira J, Milberg P, Ockinger E, Westerberg L. Butterflies in Swedish grasslands benefit from forest and respond to landscape composition at different spatial scales. *Landsc Ecol* 2018;33(12):2189–204.
- [188] Cormont A, Siepel H, Clement J, Melman TCP, WallisDeVries MF, van Turnhout CAM, et al. Landscape complexity and farmland biodiversity: evaluating the CAP target on natural elements. *J Nat Conserv* 2016;30:19–26.
- [189] Weibull AC, Ostman O. Species composition in agroecosystems: the effect of landscape, habitat, and farm management. *Basic Appl Ecol* 2003;4(4):349–61.
- [190] Botham MS, Fernandez-Ploquin EC, Brereton T, Harrower CA, Roy DB, Heard MS. Lepidoptera communities across an agricultural gradient: how important are habitat area and habitat diversity in supporting high diversity? *J Insect Conserv* 2015;19(2):403–20.
- [191] Weibull AC, Bengtsson J, Nohlgren E. Diversity of butterflies in the agricultural landscape: the role of farming system and landscape heterogeneity. *Ecography* 2000;23(6):743–50.
- [192] Brandt K, Glemnitz M, Schroder B. The impact of crop parameters and surrounding habitats on different pollinator group abundance on agricultural fields. *Agric Ecosyst Environ* 2017;243:55–66.
- [193] Ouin A, Burel F. Influence of herbaceous elements on butterfly diversity in hedgerow agricultural landscapes. *Agric Ecosyst Environ* 2002;93(1–3):45–53.
- [194] Concepcion ED, Diaz M, Kleijn D, Baldi A, Batary P, Clough Y, et al. Interactive effects of landscape context constrain the effectiveness of local agri-environmental management. *J Appl Ecol* 2012;49(3):695–705.
- [195] Delattre T, Vernon P, Burel F. An agri-environmental scheme enhances butterfly dispersal in European agricultural landscapes. *Agric Ecosyst Environ* 2013;166: 102–9.
- [196] Ockinger E, Smith HG. Asymmetric dispersal and survival indicate population sources for grassland butterflies in agricultural landscapes. *Ecography* 2007;30(2):288–98.
- [197] Fahrig L, Merriam G. Conservation of fragmented populations. *Conserv Biol* 1994; 8(1):50–9.
- [198] Ekroos J, Rundlof M, Smith HG. Trait-dependent responses of flower-visiting insects to distance to semi-natural grasslands and landscape heterogeneity. *Landsc Ecol* 2013;28(7):1283–92.

- [199] Hendrickx F, Maelfait JP, Van Wingerden W, Schweiger O, Speelmans M, Aviron S, et al. How landscape structure, land-use intensity and habitat diversity affect components of total arthropod diversity in agricultural landscapes. *J Appl Ecol* 2007;44(2):340–51.
- [200] Jauker F, Diekötter T, Schwarzbach F, Wolters V. Pollinator dispersal in an agricultural matrix: opposing responses of wild bees and hoverflies to landscape structure and distance from main habitat. *Landsc Ecol* 2009;24(4):547–55.
- [201] Seufert V, Ramankutty N, Foley JA. Comparing the yields of organic and conventional agriculture. *Nature* 2012;485(7397):229–32.
- [202] Beck SD. Insect thermoperiodism. *Annu Rev Entomol* 1983;28(1):91–108.
- [203] Dennis RLH. Just how important are structural elements as habitat components? Indications from a declining lycaenid butterfly with priority conservation status. *J Insect Conserv* 2004;8(1):37–45.
- [204] Suggitt AJ, Gillingham PK, Hill JK, Huntley B, Kunin WE, Roy DB, et al. Habitat microclimates drive fine-scale variation in extreme temperatures. *Oikos* 2011;120(1):1–8.
- [205] Suggitt AJ, Stefanescu C, Paramo F, Oliver T, Anderson BJ, Hill JK, et al. Habitat associations of species show consistent but weak responses to climate. *Biol Lett* 2012;8(4):590–3.
- [206] Suggitt AJ, Wilson RJ, August TA, Fox R, Isaac NJB, Macgregor NA, et al. Microclimate affects landscape level persistence in the British Lepidoptera. *J Insect Conserv* 2015;19(2):237–53.
- [207] Filz KJ, Wiemers M, Herrig A, Weitzel M, Schmitt T. A question of adaptability: climate and habitat change lower trait diversity in butterfly communities in south-western Germany. *Eur J Entomol* 2013;110(4):633–42.
- [208] Papanikolaou AD, Kuhn I, Frenzel M, Schweiger O. Semi-natural habitats mitigate the effects of temperature rise on wild bees. *J Appl Ecol* 2017;54(2):527–36.
- [209] Maes D, Titeux N, Hortal J, Anselin A, Declerck K, De Knijff G, et al. Predicted insect diversity declines under climate change in an already impoverished region. *J Insect Conserv* 2010;14(5):485–98.
- [210] Montag H, Parker G, Clarkson T. The effects of solar farms on local biodiversity: a comparative study. *Clarkson and Woods and Wychwood Biodiversity*; 2016.
- [211] Wintle BA, Kujala H, Whitehead A, Cameron A, Veloz S, Kukkala A, et al. Global synthesis of conservation studies reveals the importance of small habitat patches for biodiversity. *Proc Natl Acad Sci Unit States Am* 2019;116(3):909–14.
- [212] Biesmeijer K, van Kolschoten L, Wit F, Moens M. The effects of solar parks on plants and pollinators: the case of Shell Moerdijk. *Naturalis Biodiversity Center*; 2020.
- [213] Woods C. Solarview: ecological monitoring of solar sites - overview of 2018 surveys. *Clarkson & Woods Ecological Consultants*; 2019.
- [214] Guiller C, Affre L, Deschamps-Cottin M, Geslin B, Kaldonski N, Tatoni T. Impacts of solar energy on butterfly communities in mediterranean agro-ecosystems. *Environ Prog Sustain Energy* 2017;36(6):1817–23.
- [215] Hegland SJ, Boeke L. Relationships between the density and diversity of floral resources and flower visitor activity in a temperate grassland community. *Ecol Entomol* 2006;31(5):532–8.
- [216] Uyttenbroeck R, Piqueray J, Hatt S, Mahy G, Monty A. Increasing plant functional diversity is not the key for supporting pollinators in wildflower strips. *Agric Ecosyst Environ* 2017;249:144–55.
- [217] O'Connor S, Park KJ, Goulson D. Location of bumblebee nests is predicted by counts of nest-searching queens. *Ecol Entomol* 2017;42(6):731–6.
- [218] Fussell M, Corbet SA. Flower useage by bumblebees – a basis for forage plant management. *J Appl Ecol* 1992;29(2):451–65.
- [219] Cresswell JE. A meta-analysis of experiments testing the effects of a neonicotinoid insecticide (imidacloprid) on honey bees. *Ecotoxicology* 2011;20(1):149–57.
- [220] Hesselbach H, Scheiner R. Effects of the novel pesticide flupyradifurone (Sivanto) on honeybee taste and cognition. *Sci Rep* 2018;8.
- [221] Kessler SC, Tiedecken EJ, Simcock KL, Derveau S, Mitchell J, Sofley S, et al. Bees prefer foods containing neonicotinoid pesticides. *Nature* 2015;521(7550):74–U145.
- [222] Carvell C, Bourke AFG, Dreier S, Freeman SN, Hulmes S, Jordan WC, et al. Bumblebee family lineage survival is enhanced in high-quality landscapes. *Nature* 2017;543(7646):547–+.
- [223] Danner N, Molitor AM, Schiele S, Hartel S, Steffan-Dewenter I. Season and landscape composition affect pollen foraging distances and habitat use of honey bees. *Ecol Appl* 2016;26(6):1920–9.
- [224] Donkersley P, Rhodes G, Pickup RW, Jones KC, Wilson K. Honeybee nutrition is linked to landscape composition. *Ecology and Evolution* 2014;4(21):4195–206.
- [225] Gamez-Virues S, Perovic DJ, Gossner MM, Borsching C, Bluthgen N, de Jong H, et al. Landscape simplification filters species traits and drives biotic homogenization. *Nat Commun* 2015;6.
- [226] Clough Y, Ekroos J, Baldi A, Batary P, Bommarco R, Gross N, et al. Density of insect-pollinated grassland plants decreases with increasing surrounding land-use intensity. *Ecol Lett* 2014;17(9):1168–77.
- [227] Haenke S, Scheid B, Schaefer M, Tscharnkte T, Thies C. Increasing syrphid fly diversity and density in sown flower strips within simple vs. complex landscapes. *J Appl Ecol* 2009;46(5):1106–14.
- [228] Holzschuh A, Steffan-Dewenter I, Tscharnkte T. How do landscape composition and configuration, organic farming and fallow strips affect the diversity of bees, wasps and their parasitoids? *J Anim Ecol* 2010;79(2):491–500.
- [229] Martin EA, Dainese M, Clough Y, Baldi A, Bommarco R, Gagic V, et al. The interplay of landscape composition and configuration: new pathways to manage functional biodiversity and agroecosystem services across Europe. *Ecol Lett* 2019;22(7):1083–94.
- [230] Dainese M, Martin EA, Aizen MA, Albrecht M, Bartomeus I, Bommarco R, et al. A global synthesis reveals biodiversity-mediated benefits for crop production. *Science Advances* 2019;5(10).
- [231] Danner N, Keller A, Hartel S, Steffan-Dewenter I. Honey bee foraging ecology: season but not landscape diversity shapes the amount and diversity of collected pollen. *PLoS One* 2017;12(8).
- [232] Lindstrom SAM, Herbertsson L, Rundlöf M, Bommarco R, Smith HG. Experimental evidence that honeybees depress wild insect densities in a flowering crop. In: *Proceedings of the royal society B-biological sciences*, vol. 2016; 1843. p. 283.
- [233] Oliver TH, Gillings S, Pearce-Higgins JW, Brereton T, Crick HQP, Duffield SJ, et al. Large extents of intensive land use limit community reorganization during climate warming. *Global Change Biol* 2017;23(6):2272–83.
- [234] Ockinger E, Smith HG. Do corridors promote dispersal in grassland butterflies and other insects? *Landsc Ecol* 2008;23(1):27–40.
- [235] Ockinger E, Winsa M, Roberts SPM, Bommarco R. Mobility and resource use influence the occurrence of pollinating insects in restored seminatural grassland fragments. *Restor Ecol* 2018;26(5):873–81.
- [236] Dover JW, Sparks TH, Greatorex-Davies JN. The importance of shelter for butterflies in open landscapes. *J Insect Conserv* 1997;1(2):89–97.